

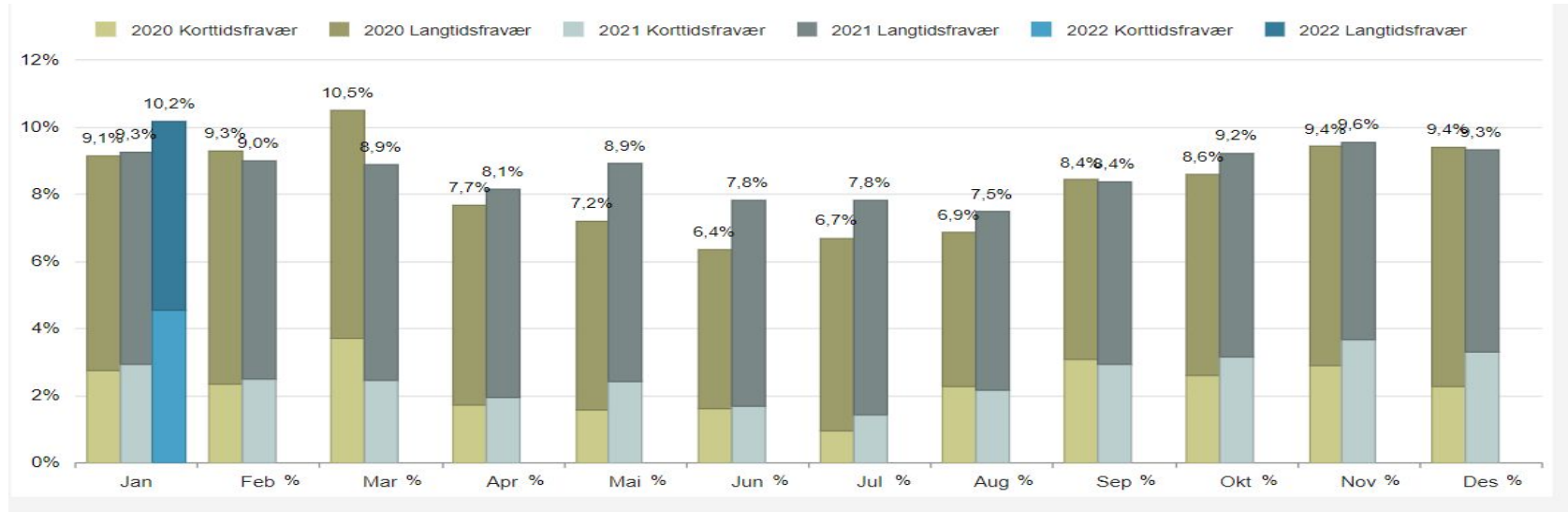


Larvik  
kommune

# Fraværsrapport pr. januar 2022

Adm. utvalget 16. mars 2022

# Larvik kommune

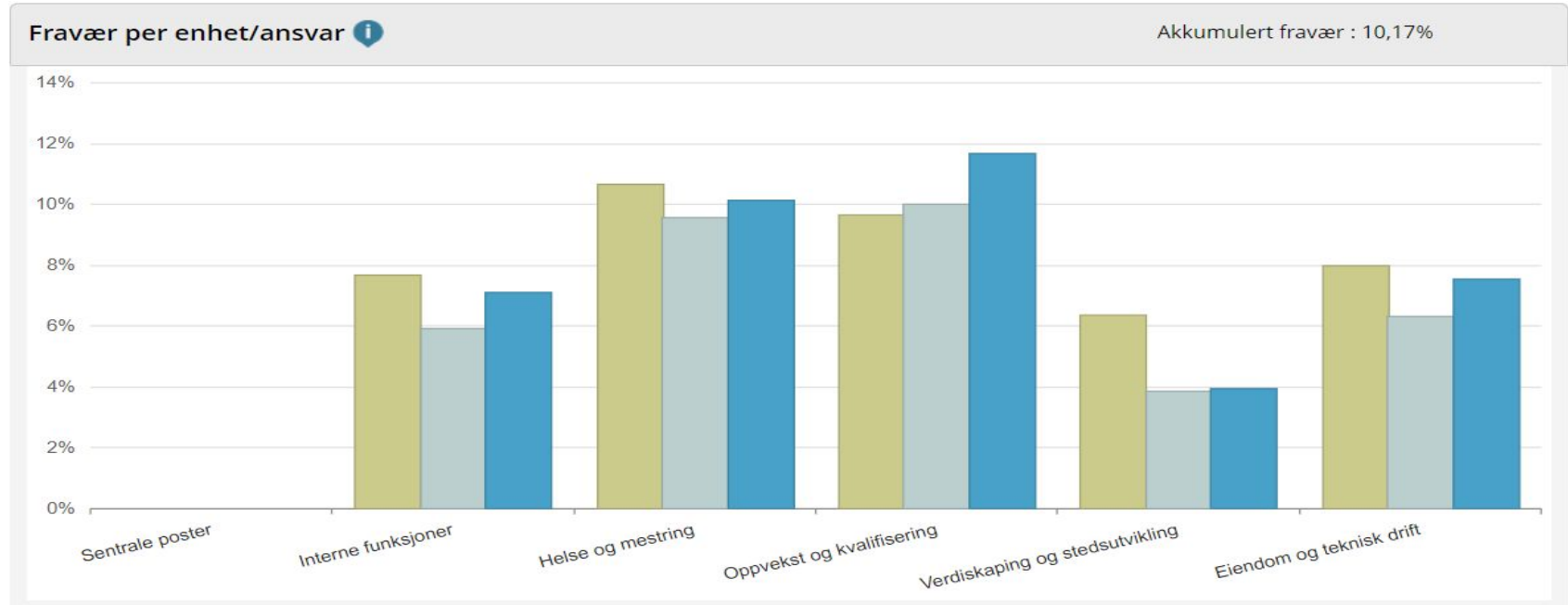


Fravær per enhet/ansvar 

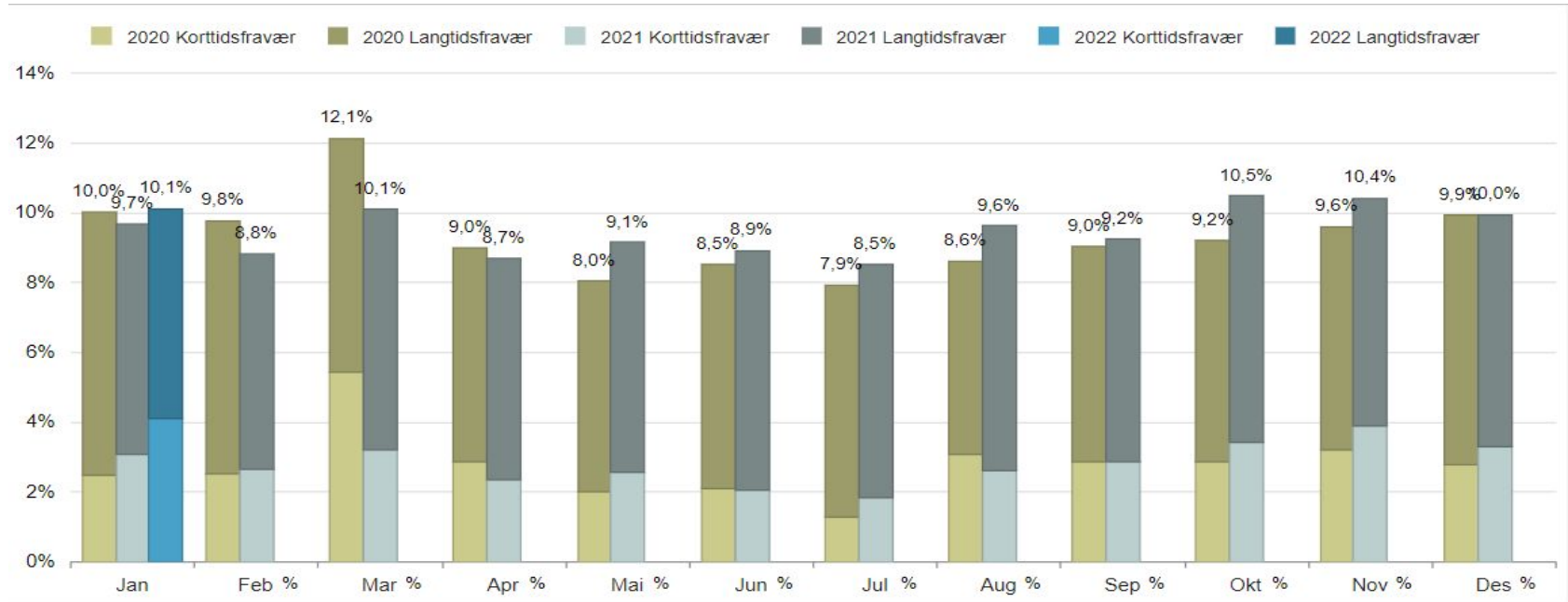
Akkumulert fravær : 10,17%



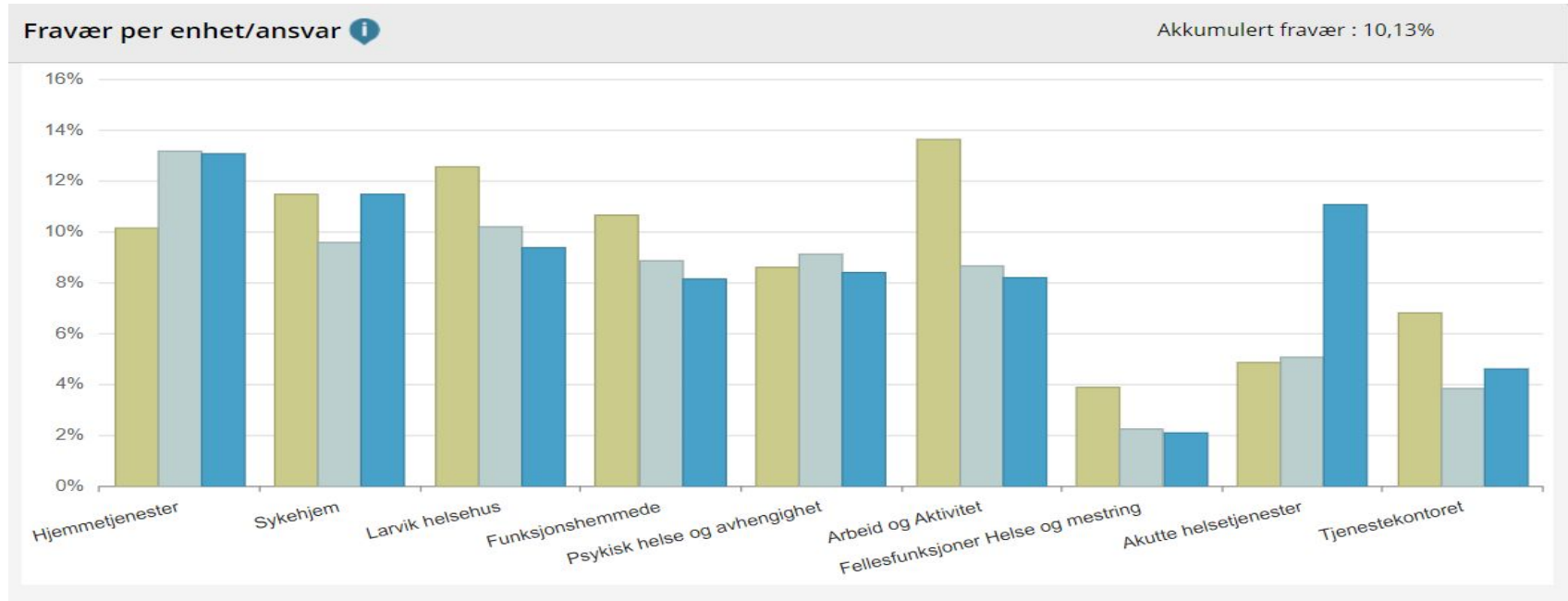
# Larvik kommune



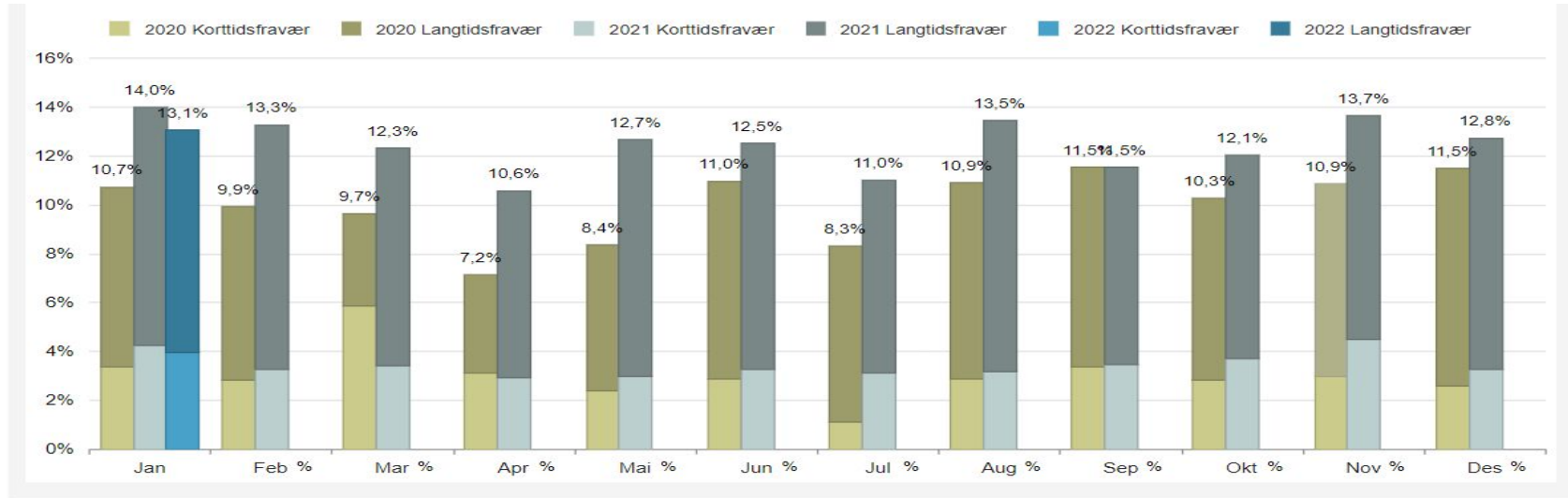
# Helse og mestring



# Helse og mestring - virksomheter



# Hjemmetjenester

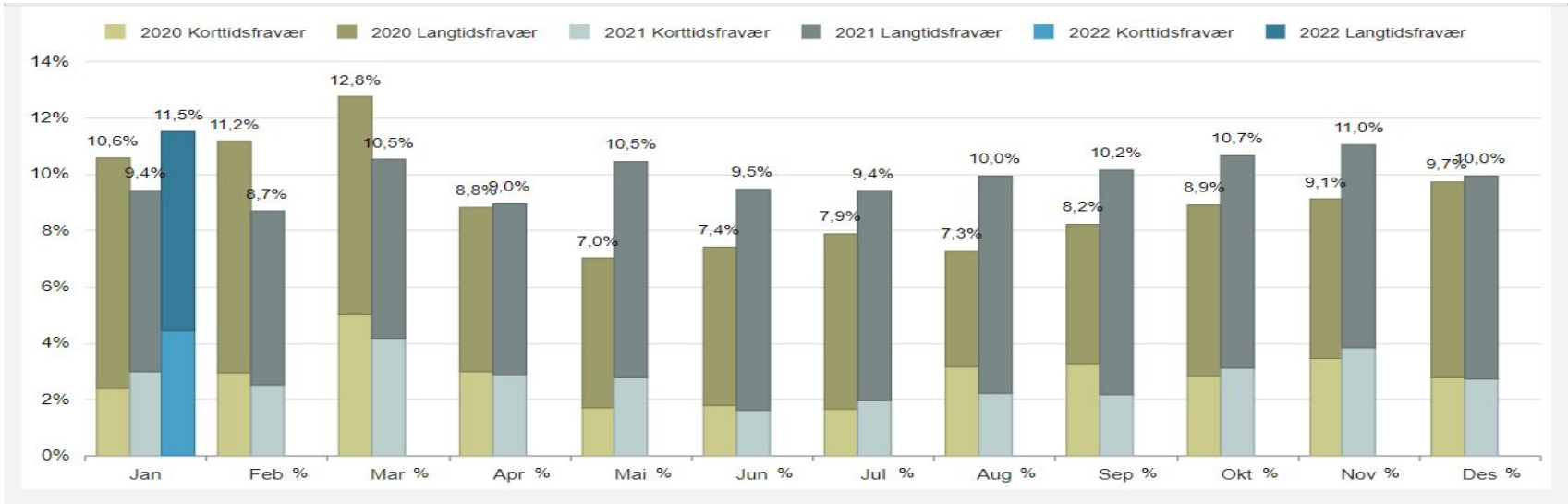


Fravær per enhet/ansvar 

Akkumulert fravær : 13,06%



# Sykehjem

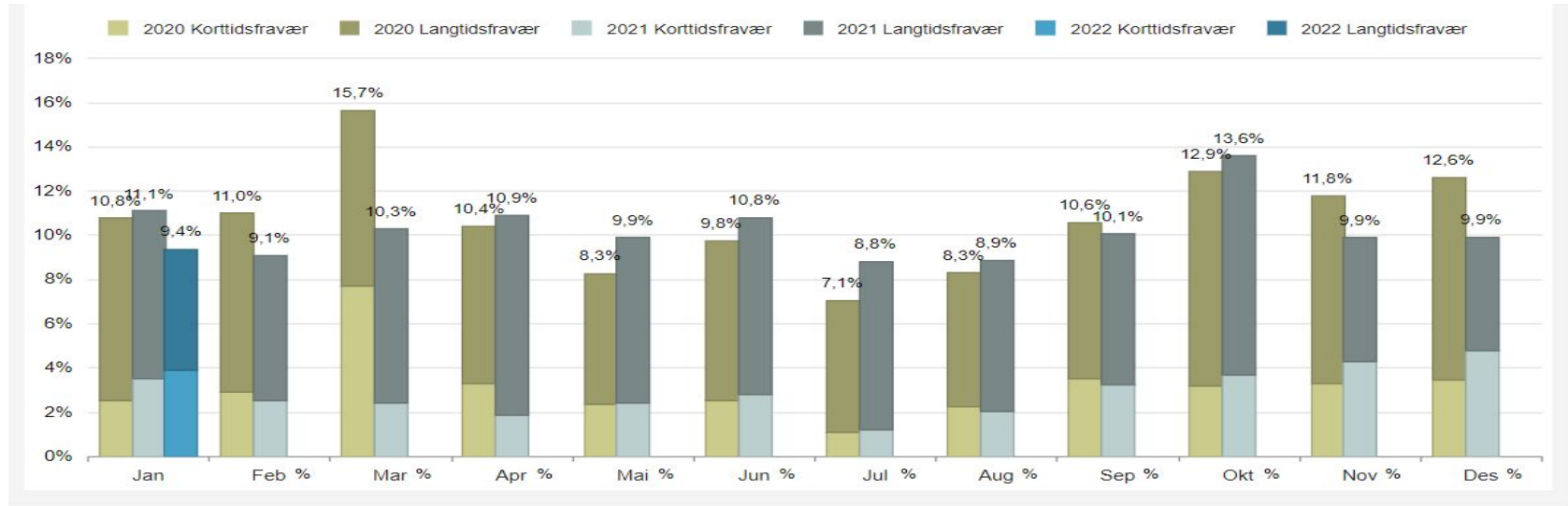


Fravær per enhet/ansvar 

Akkumulert fravær : 11,51%



# Larvik helsehus



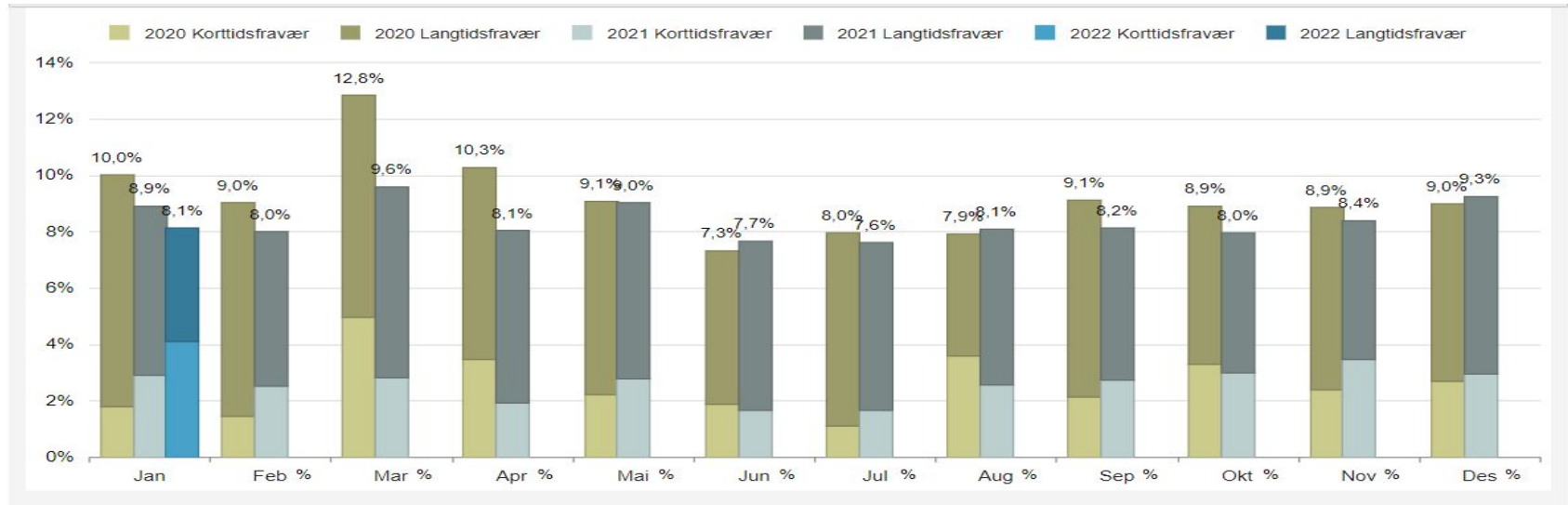
Fravær per enhet/ansvar 

Akkumulert fravær : 9,40%





# Funksjonshemmede

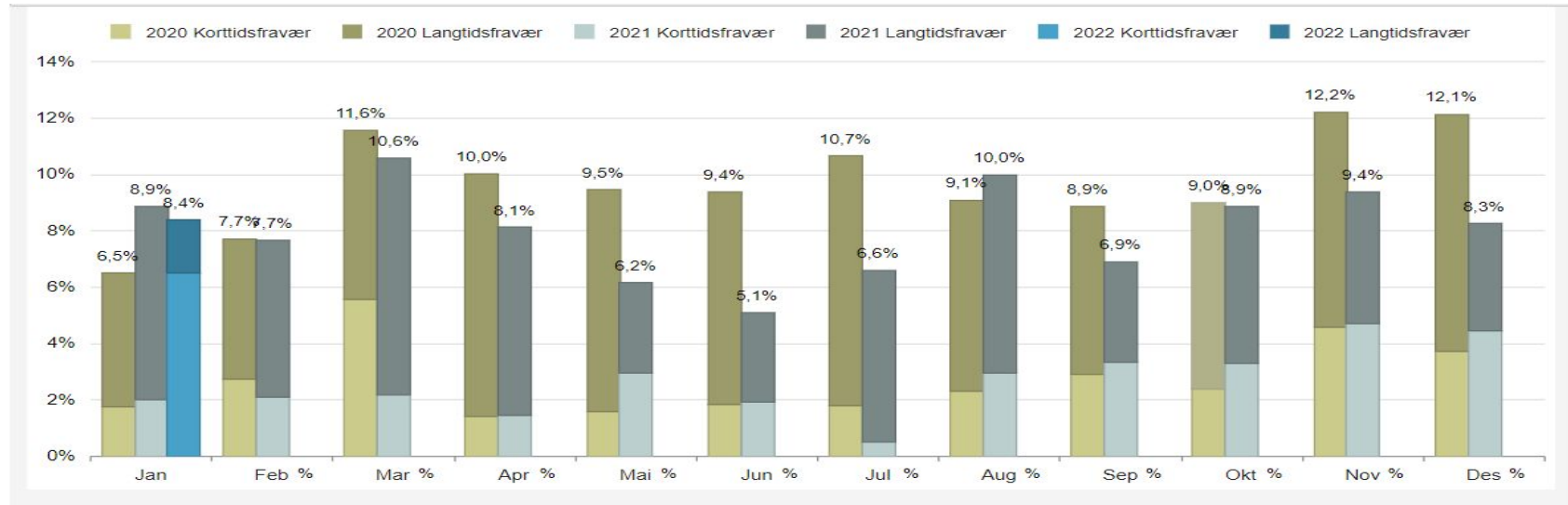


Fravær per enhet/ansvar ⓘ

Akkumulert fravær : 8,14%



# Psykisk helse og avhengighet

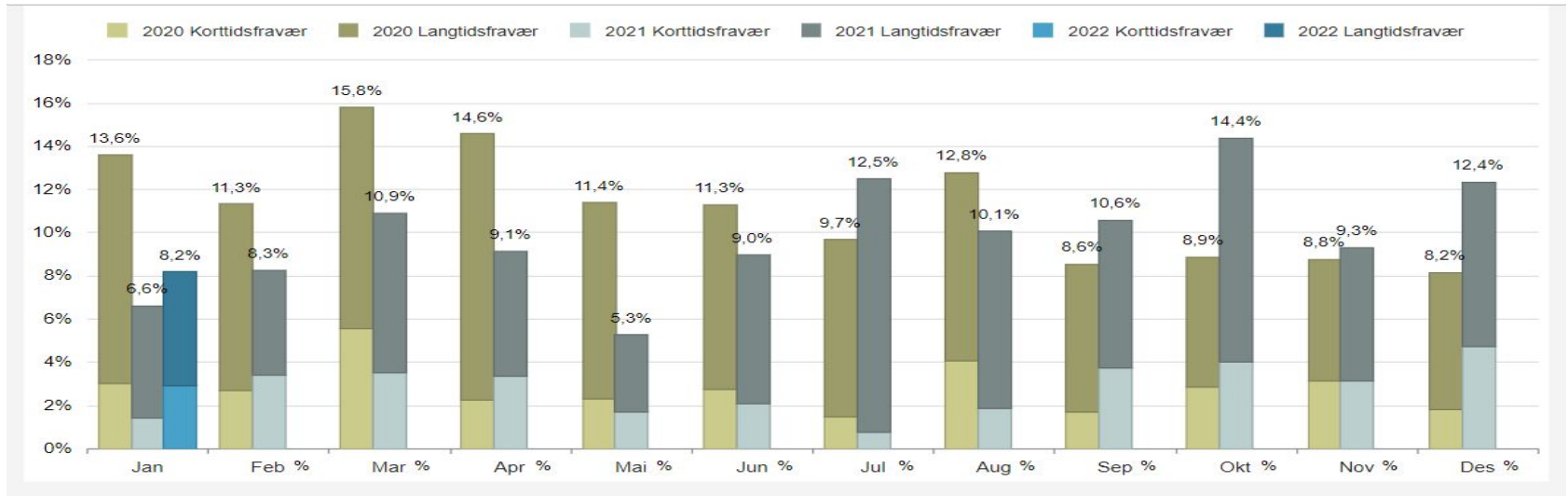



Fravær per enhet/ansvar ⓘ

Akkumulert fravær : 8,39%



# Arbeid og aktivitet

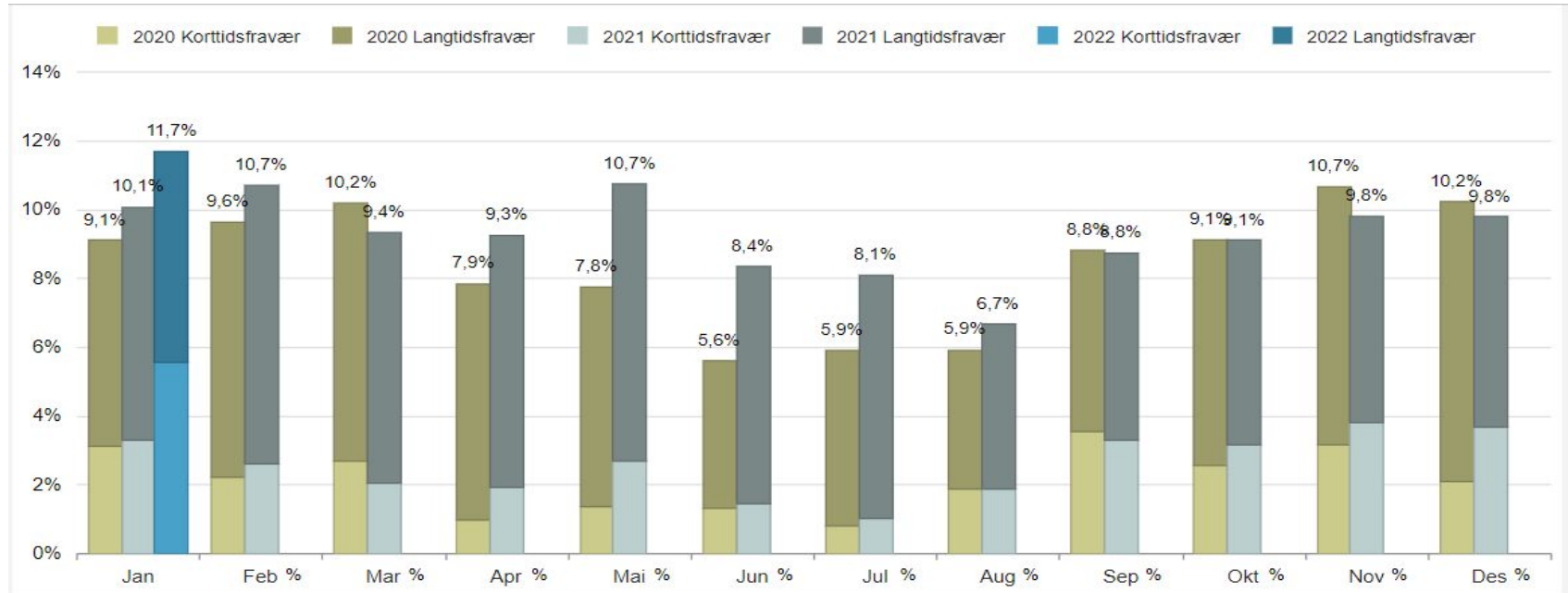


Fravær per enhet/ansvar 

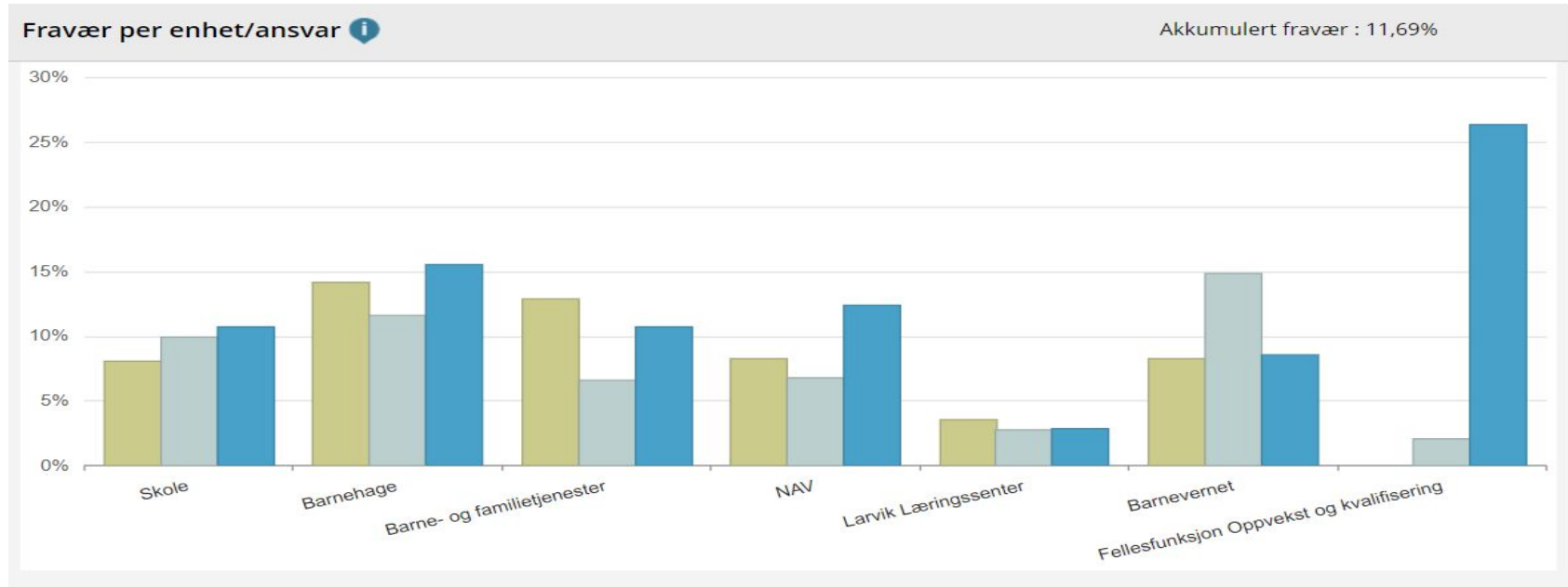
Akkumulert fravær : 8,19%



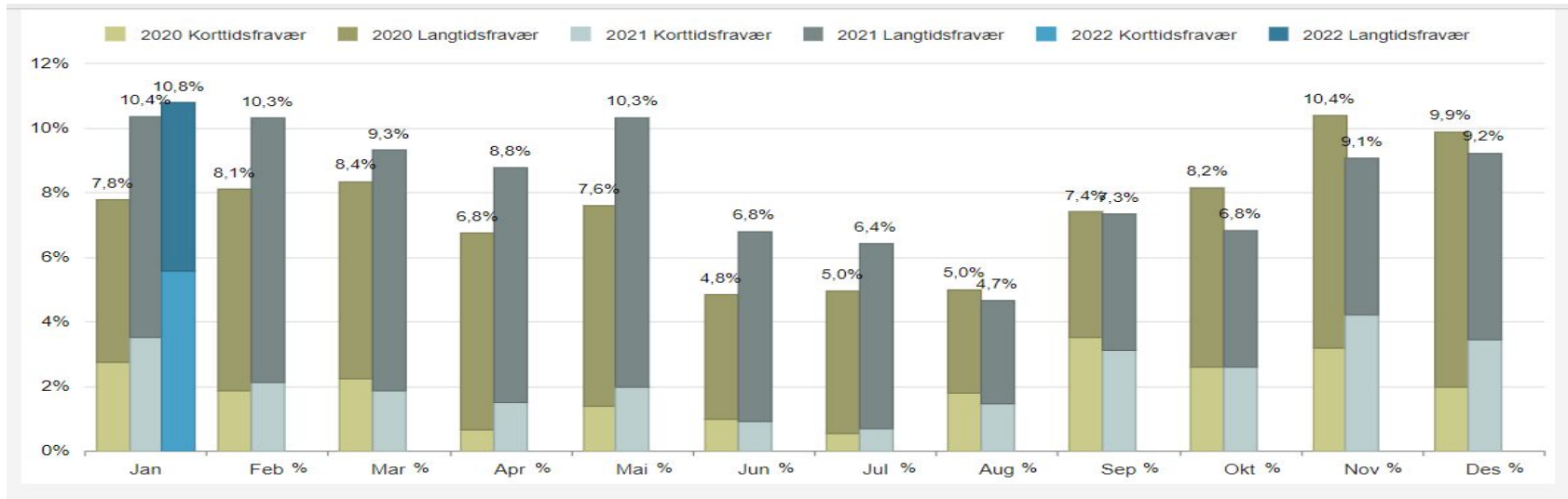
# Oppvekst og kvalifisering




# Oppvekst og kvalifisering - virksomheter



# Skole

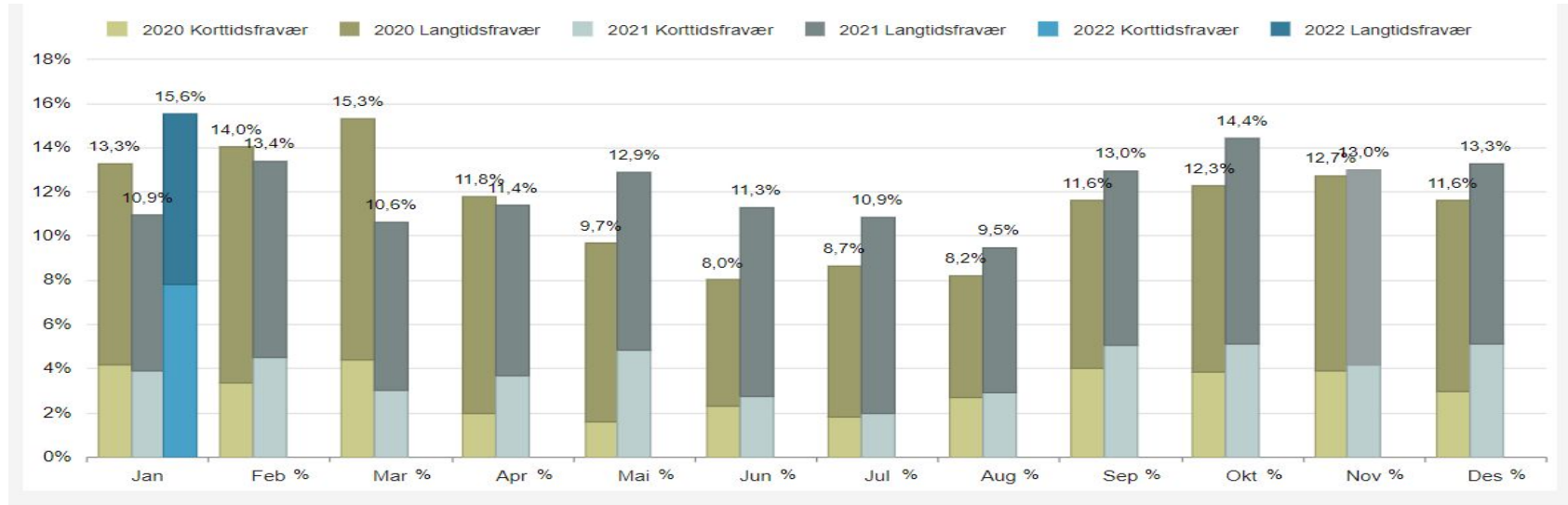



Fravær per enhet/ansvar 

Akkumulert fravær : 10,78%



# Barnehage

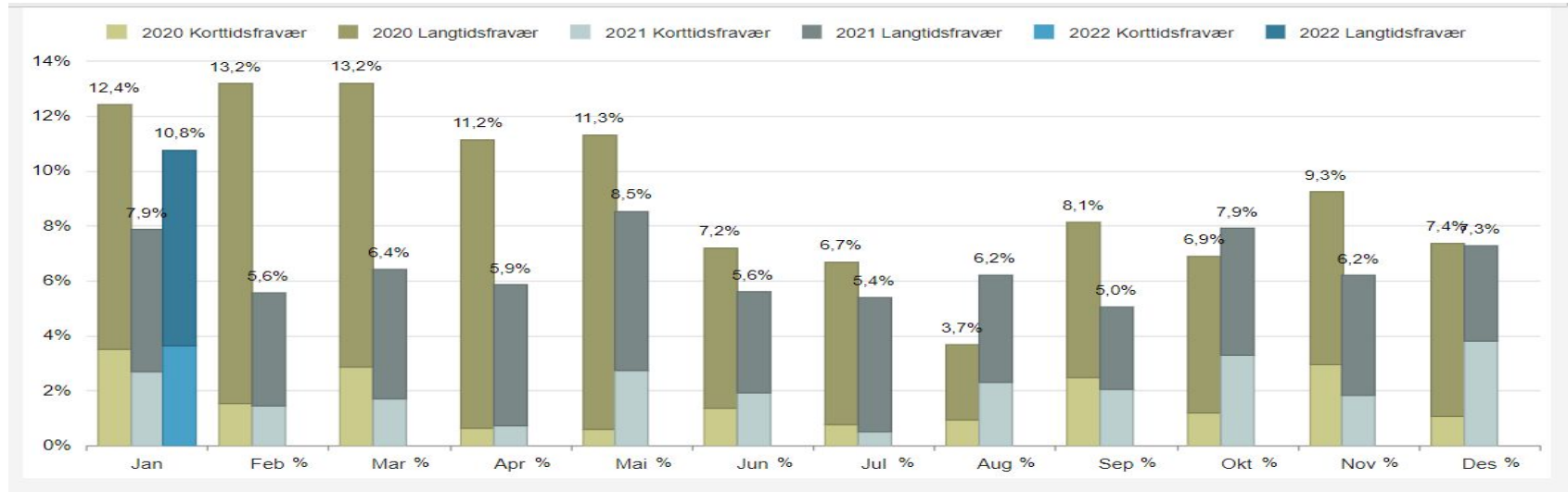



Fravær per enhet/ansvar 

Akkumulert fravær : 15,55%



# Barne- og familietjenester



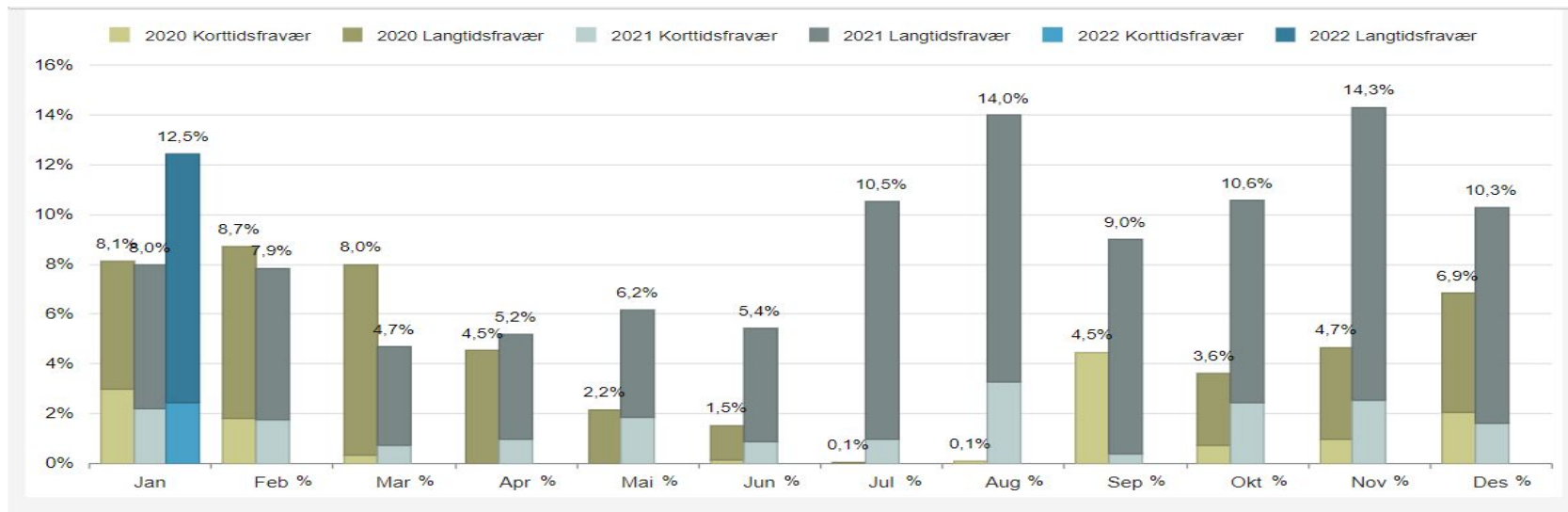
Fravær per enhet/ansvar 

Akkumulert fravær : 10,77%





# Nav

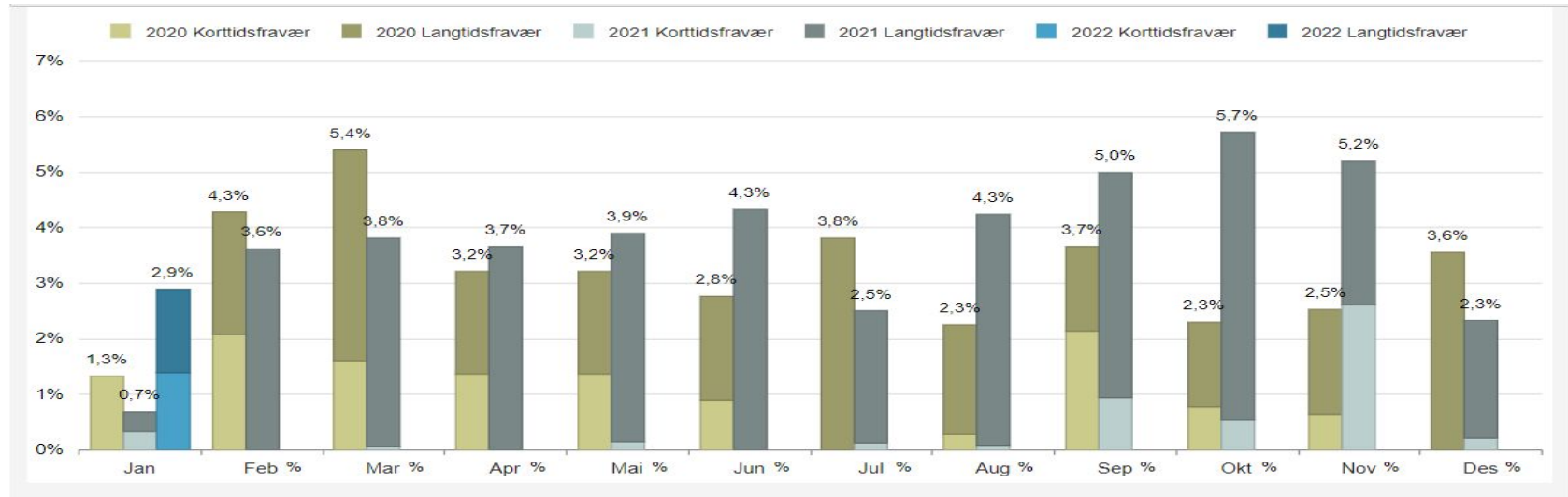


Fravær per enhet/ansvar 

Akkumulert fravær : 12,45%



# Larvik læringscenter

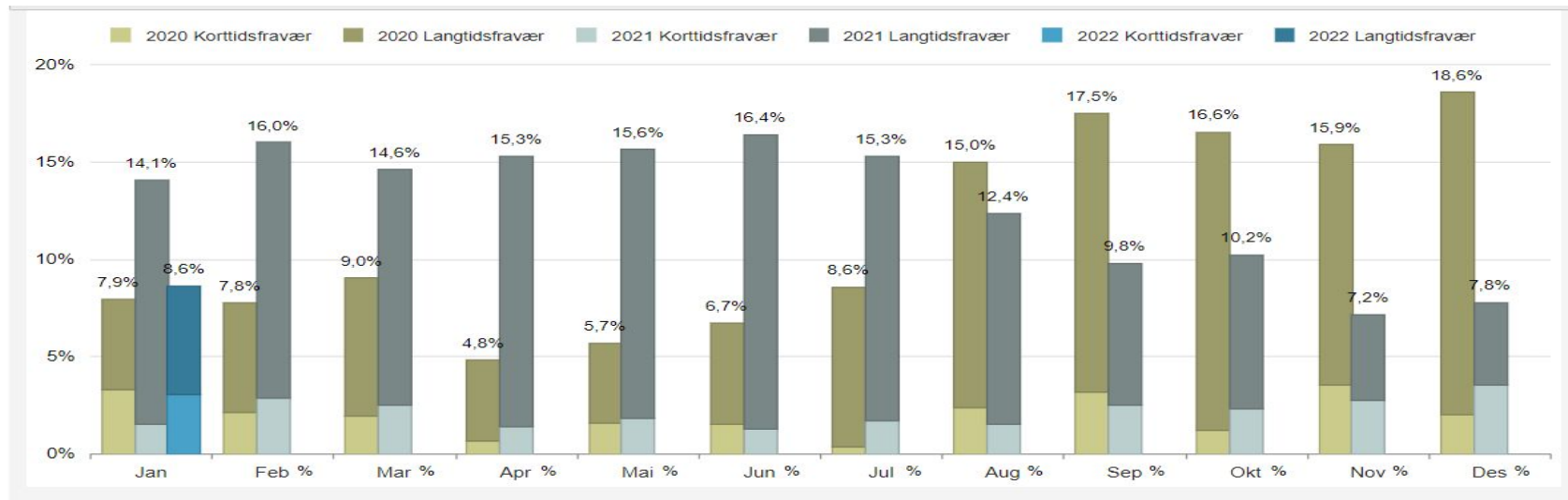


Fravær per enhet/ansvar 

Akkumulert fravær : 2,89%



# Barnevernet

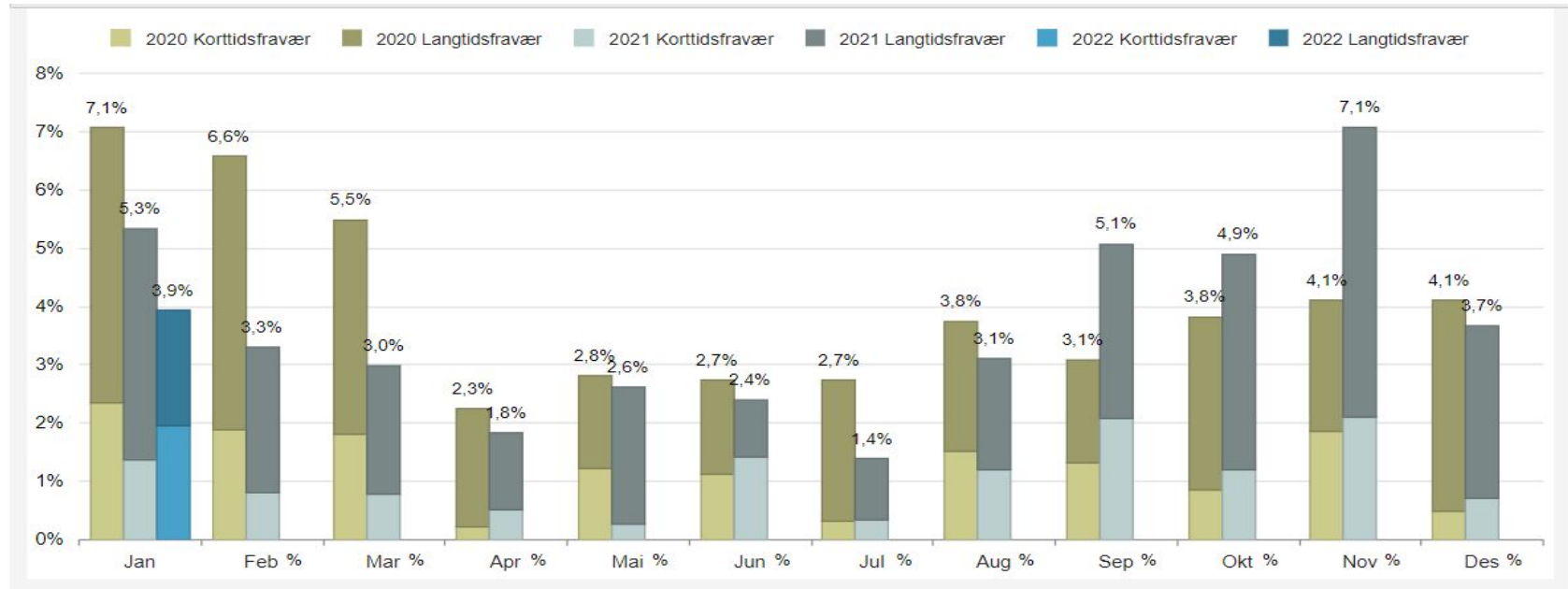


Fravær per enhet/ansvar ⓘ

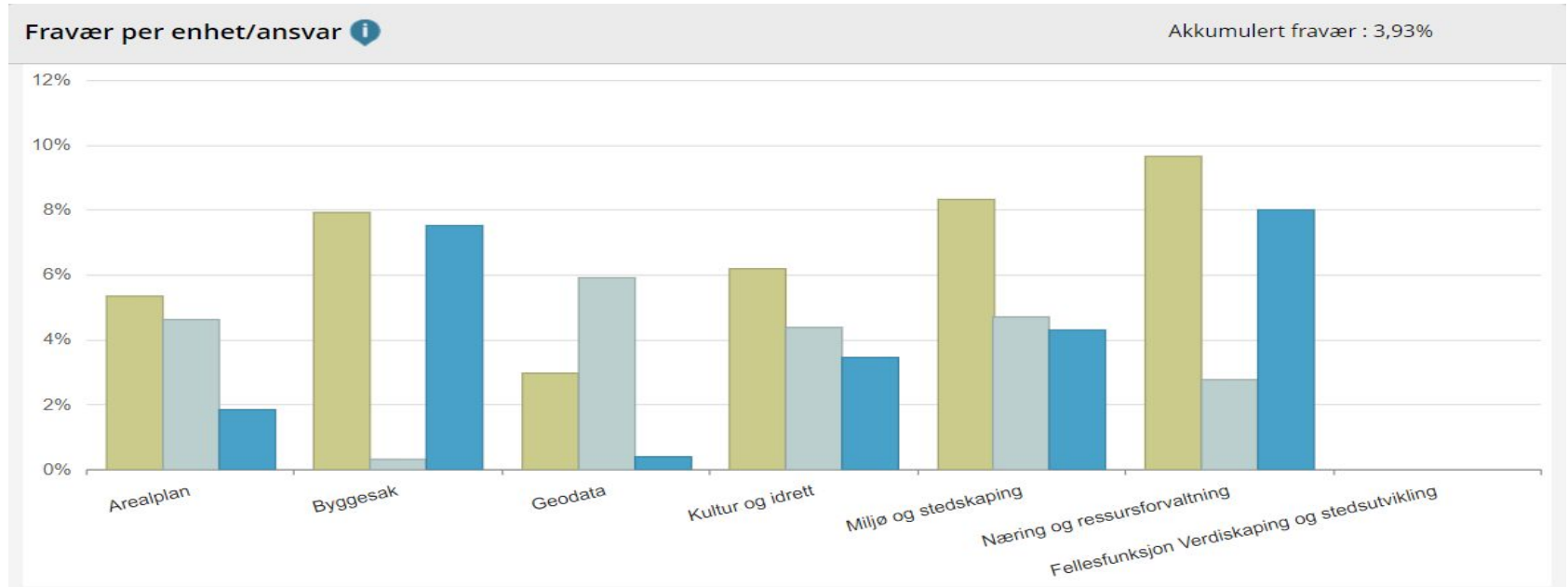
Akkumulert fravær : 8,63%



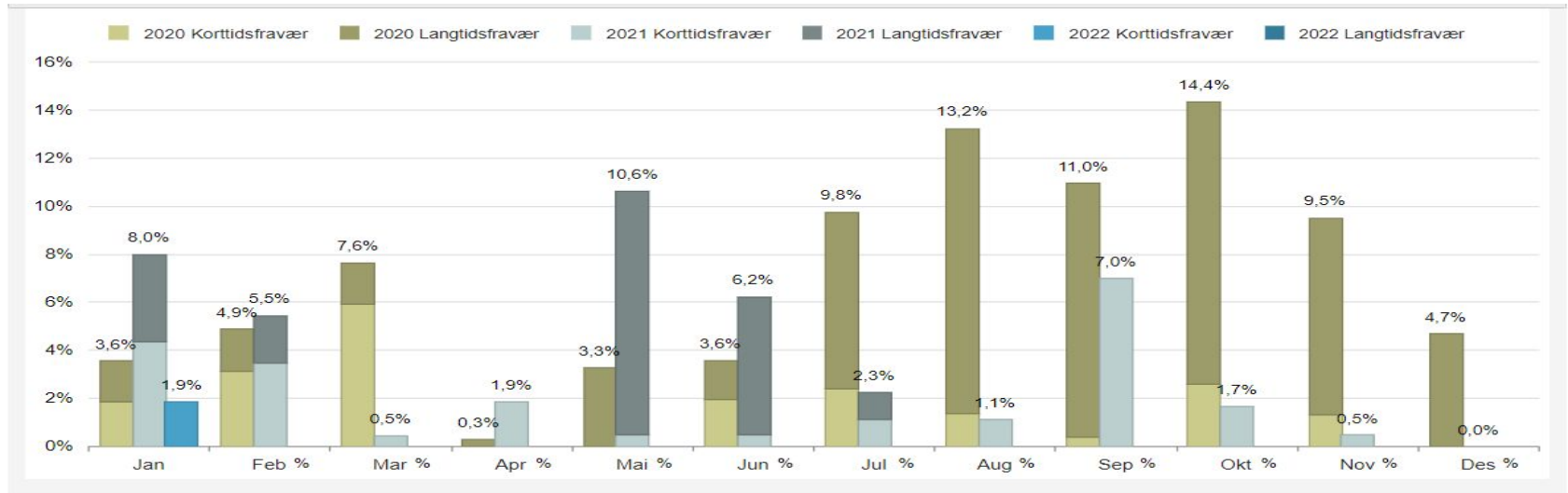
# Verdiskaping og stedsutvikling




# Verdiskaping og stedsutvikling - virksomh.



# Arealplan

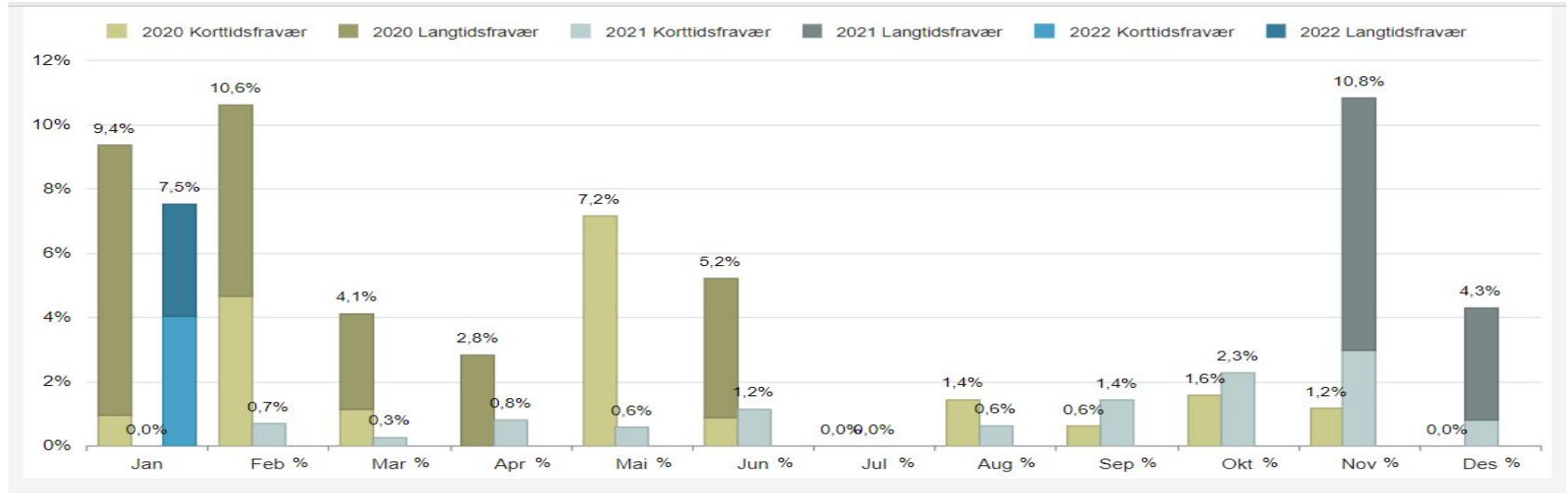



Fravær per enhet/ansvar 

Akkumulert fravær : 1,85%



# Byggesak

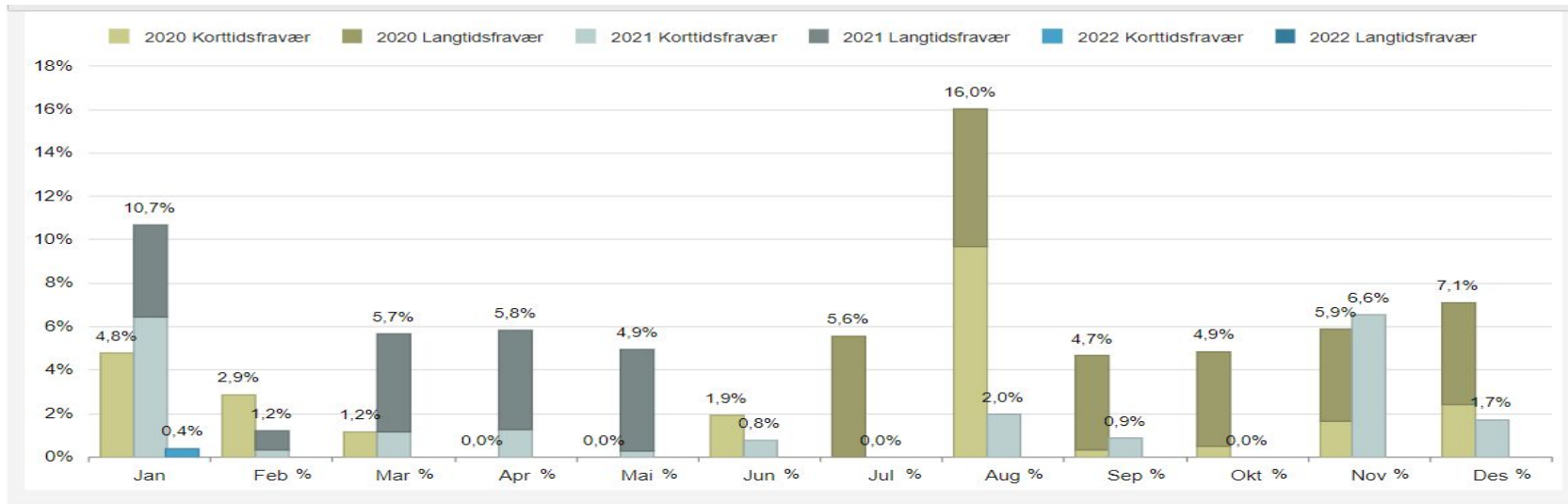



Fravær per enhet/ansvar 

Akkumulert fravær : 7,53%



# Geodata



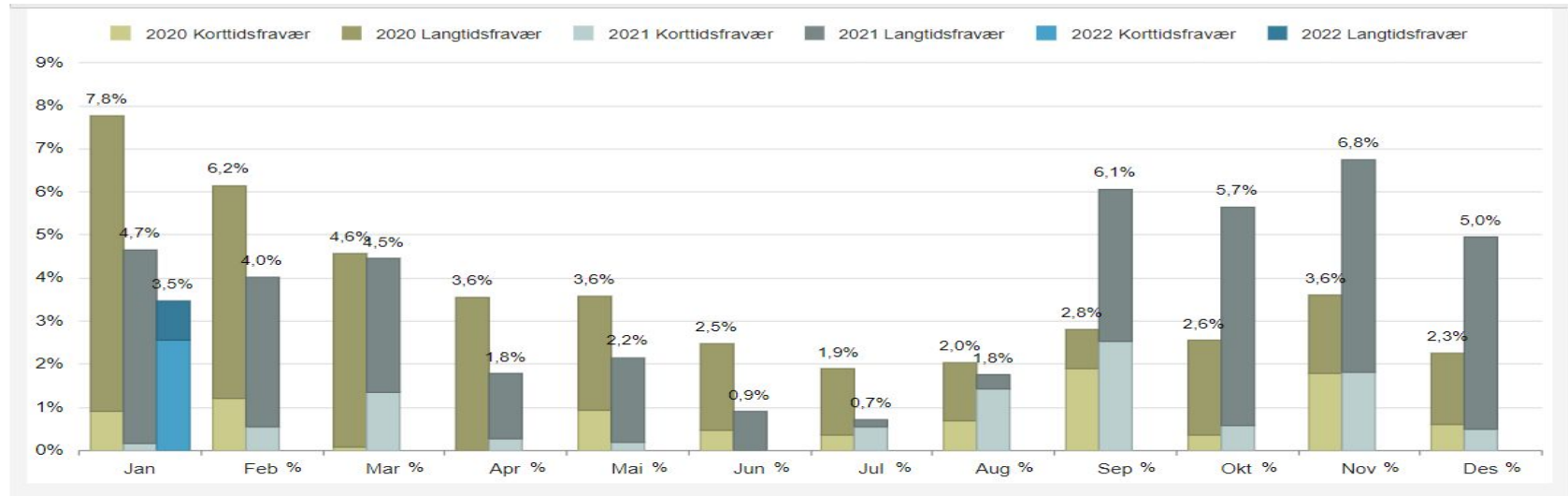
Fravær per enhet/ansvar 


Akkumulert fravær : 0,41%





# Kultur og idrett

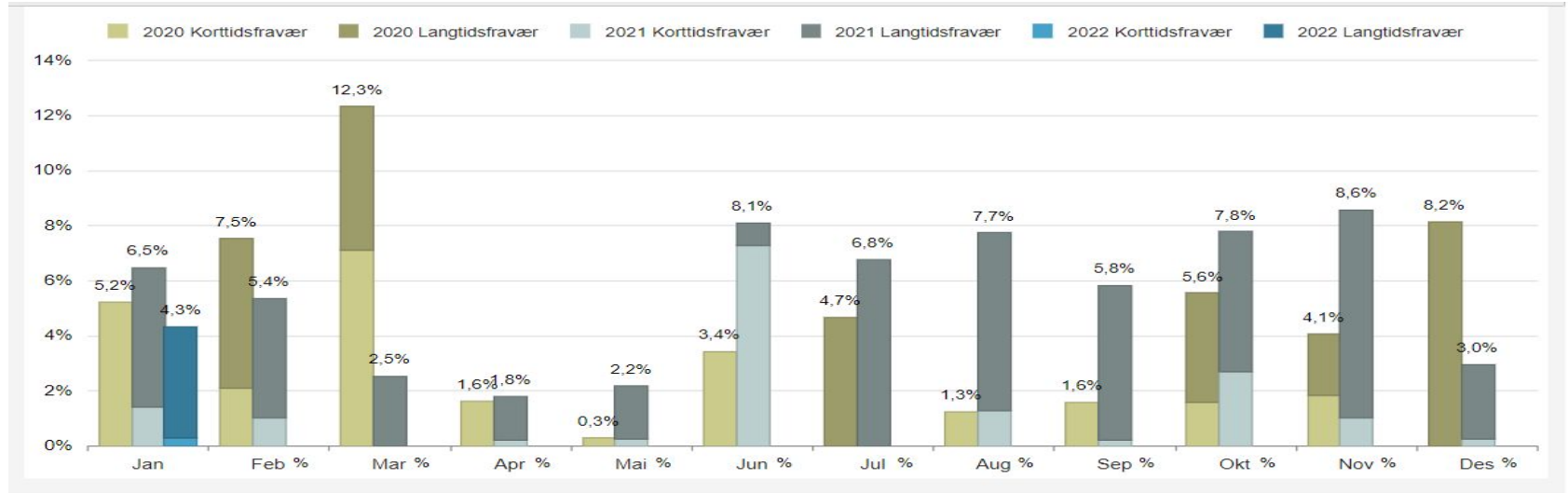



Fravær per enhet/ansvar 

Akkumulert fravær : 3,48%



# Miljø og stedskaping

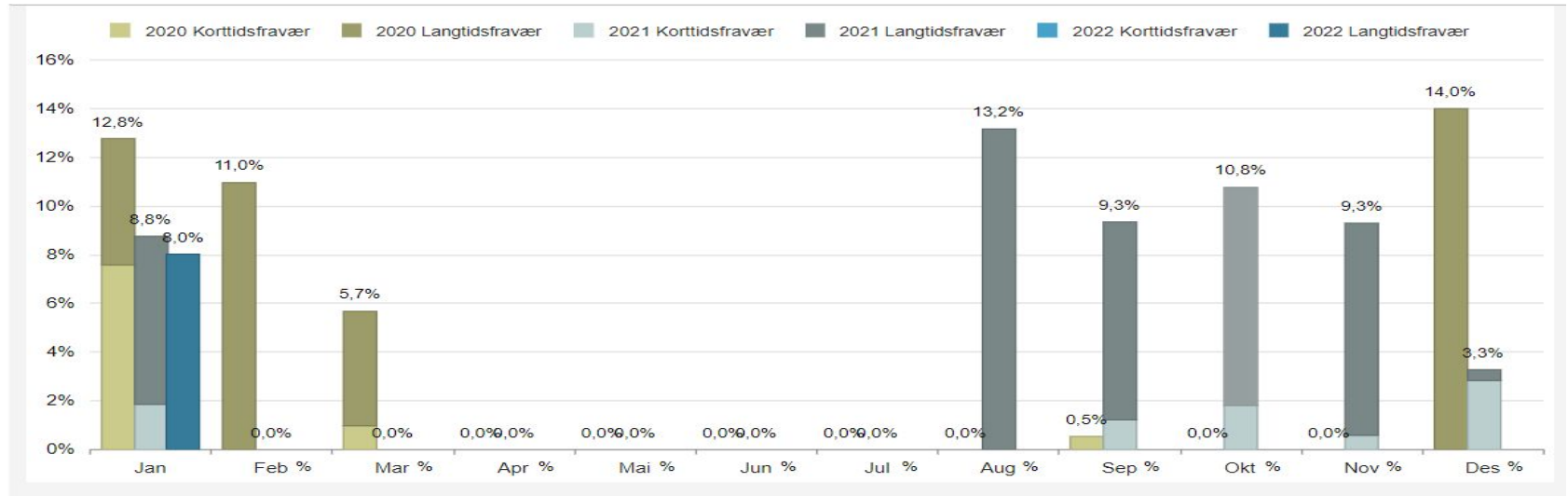


Fravær per enhet/ansvar 

Akkumulert fravær : 4,33%



# Næring og ressursforvaltning

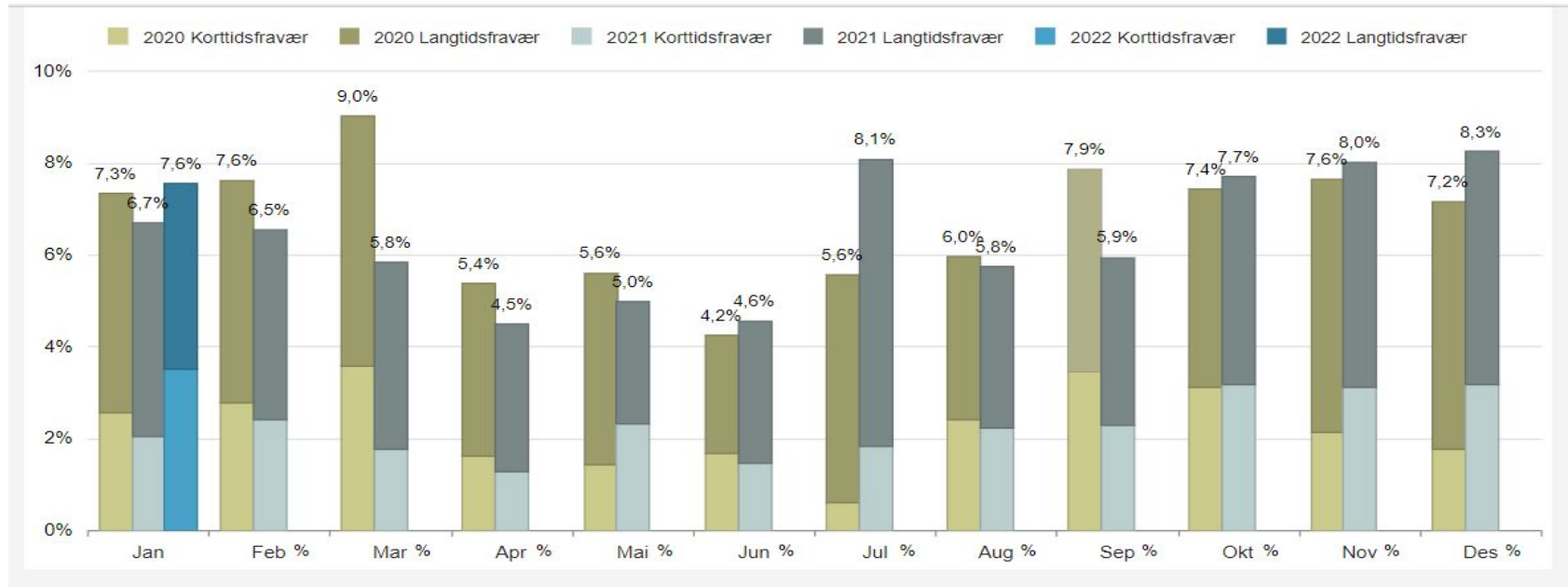


Fravær per enhet/ansvar ⓘ

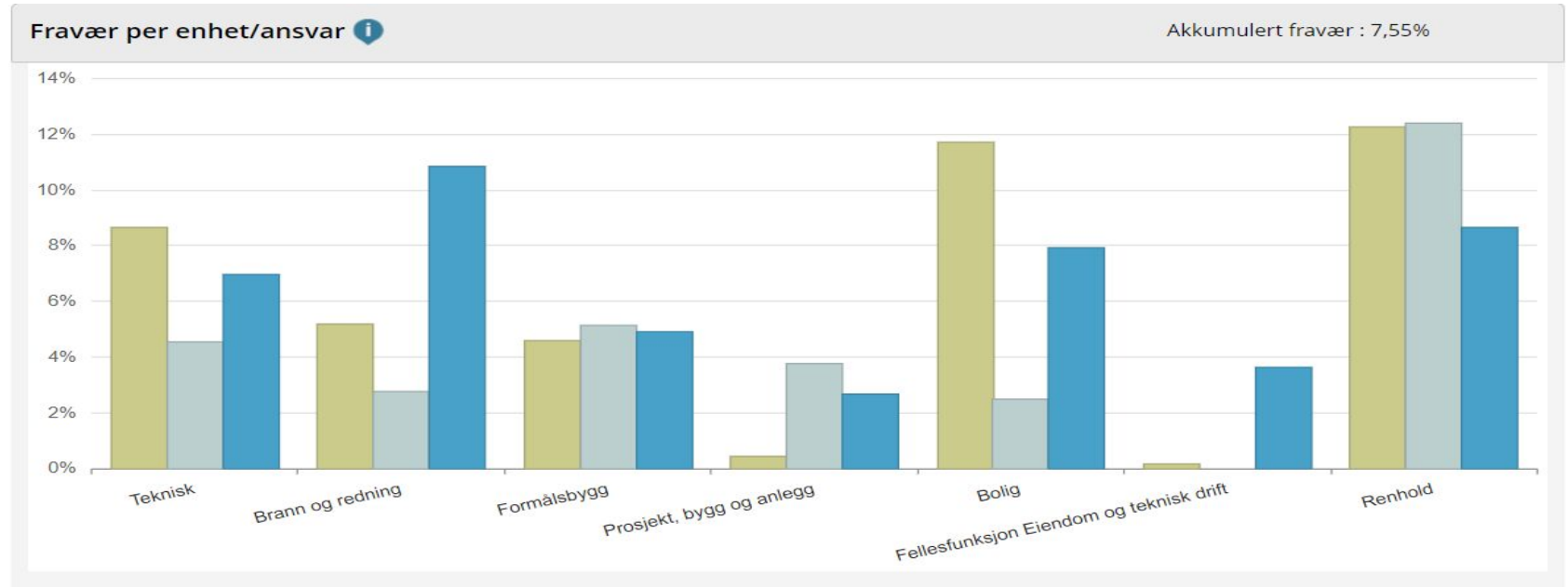
Akkumulert fravær : 8,01%



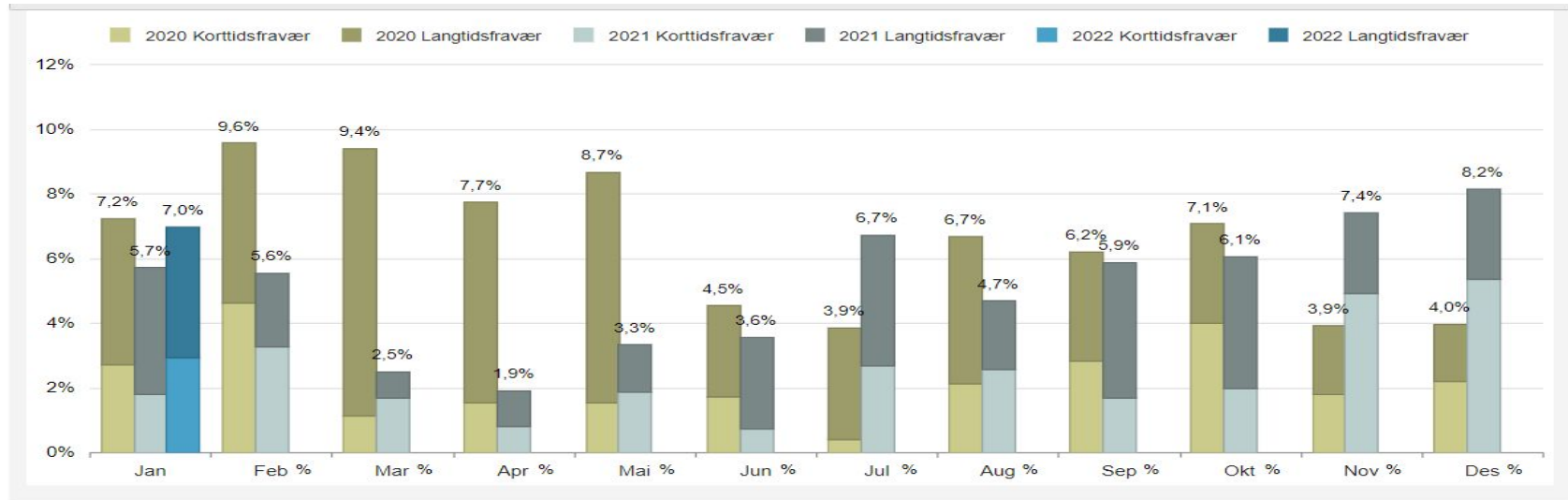
# Eiendom og teknisk




# Eiendom og teknisk - virksomheter



# Teknisk

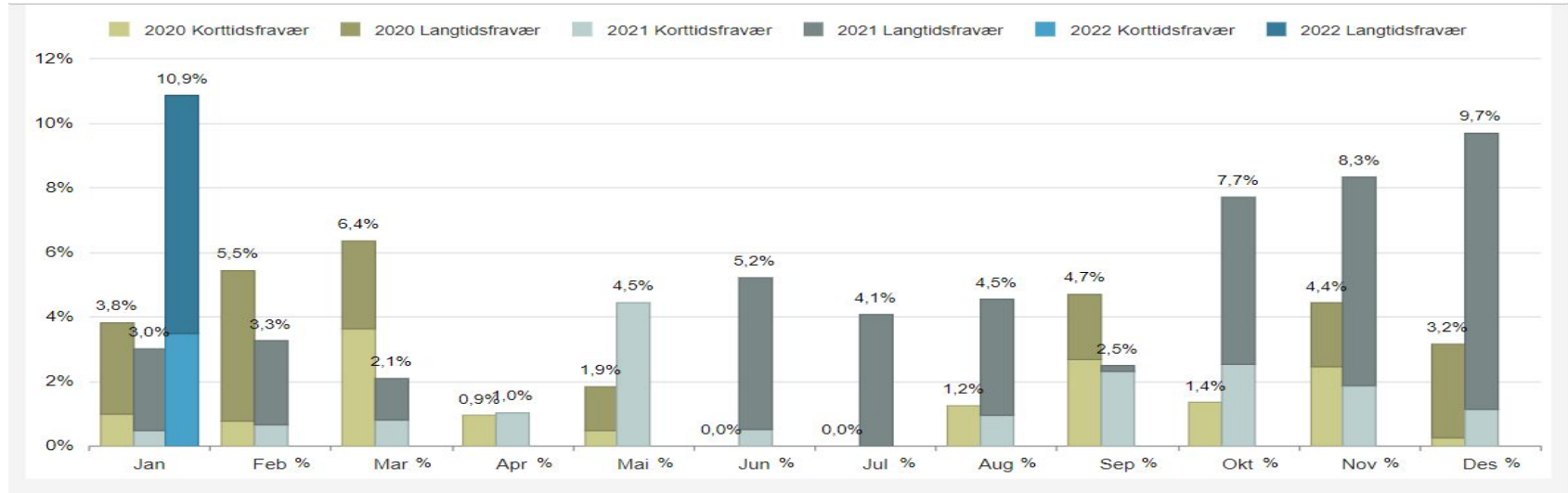


Fravær per enhet/ansvar 

Akkumulert fravær : 6,98%



# Brann og redning

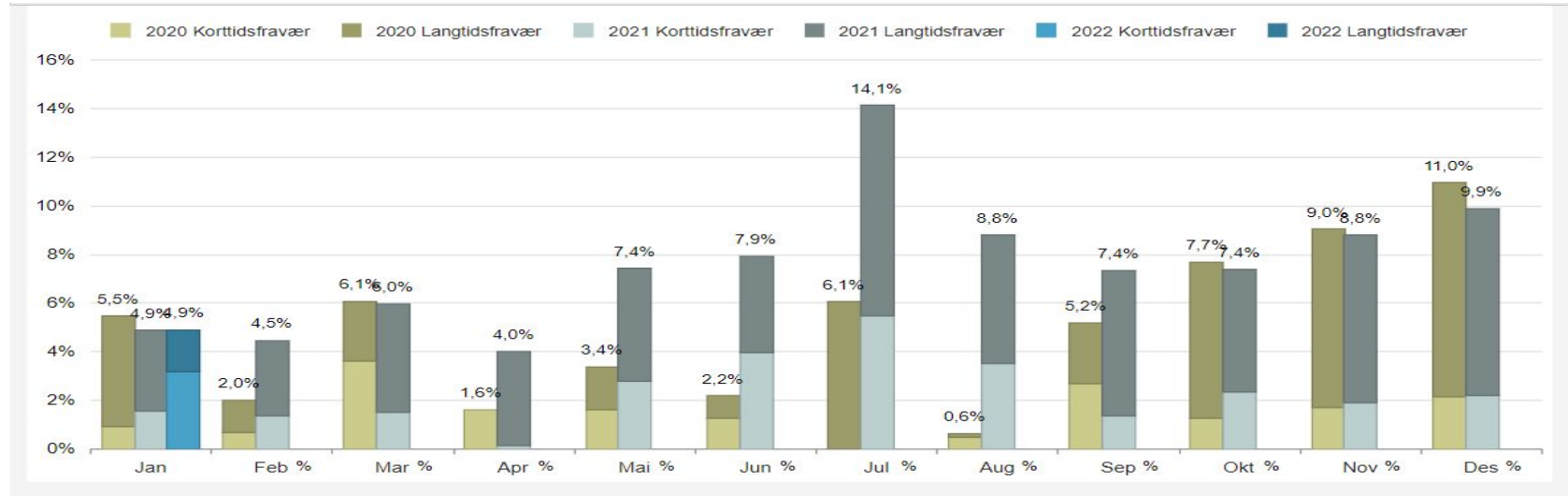



Fravær per enhet/ansvar 

Akkumulert fravær : 10,86%



# Formålsbygg



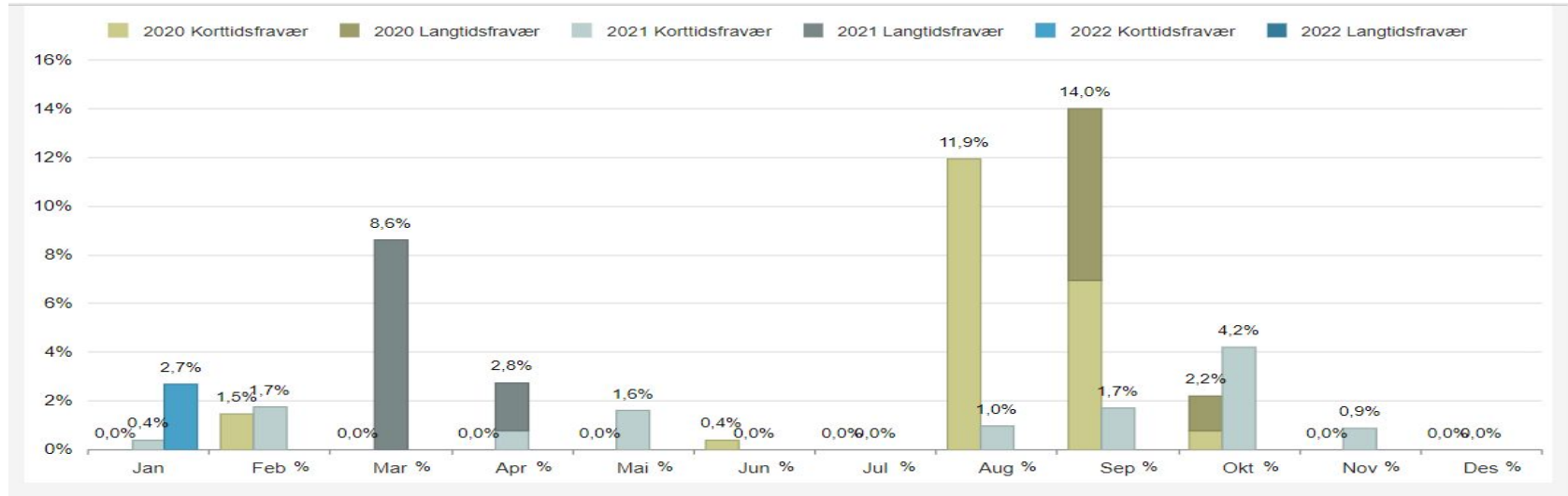
Fravær per enhet/ansvar 

Akkumulert fravær : 4,90%





# Prosjekt, bygg og anlegg

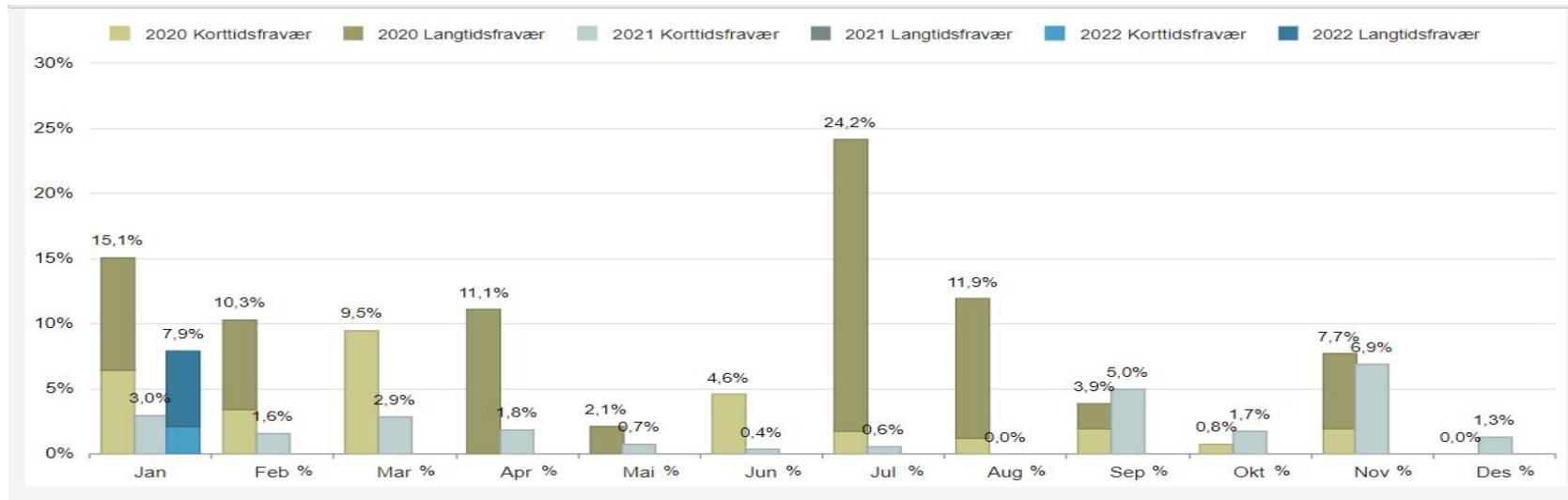


Fravær per enhet/ansvar 

Akkumulert fravær : 2,68%



# Bolig

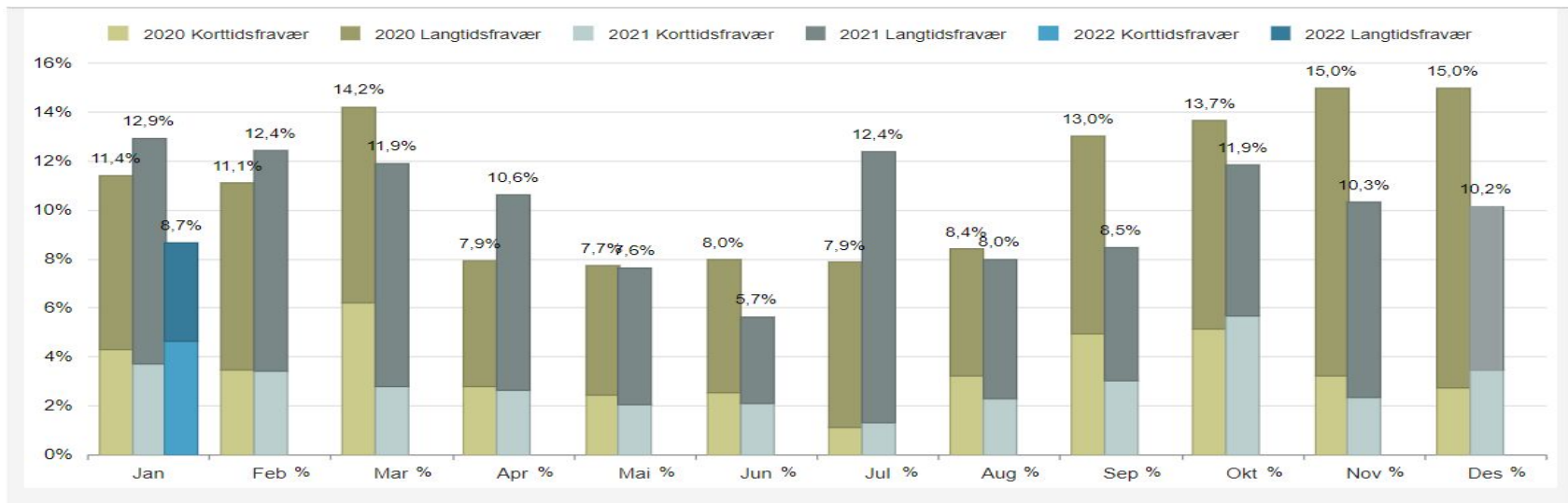


Fravær per enhet/ansvar 

Akkumulert fravær : 7,92%



# Renhold



Fravær per enhet/ansvar ⓘ

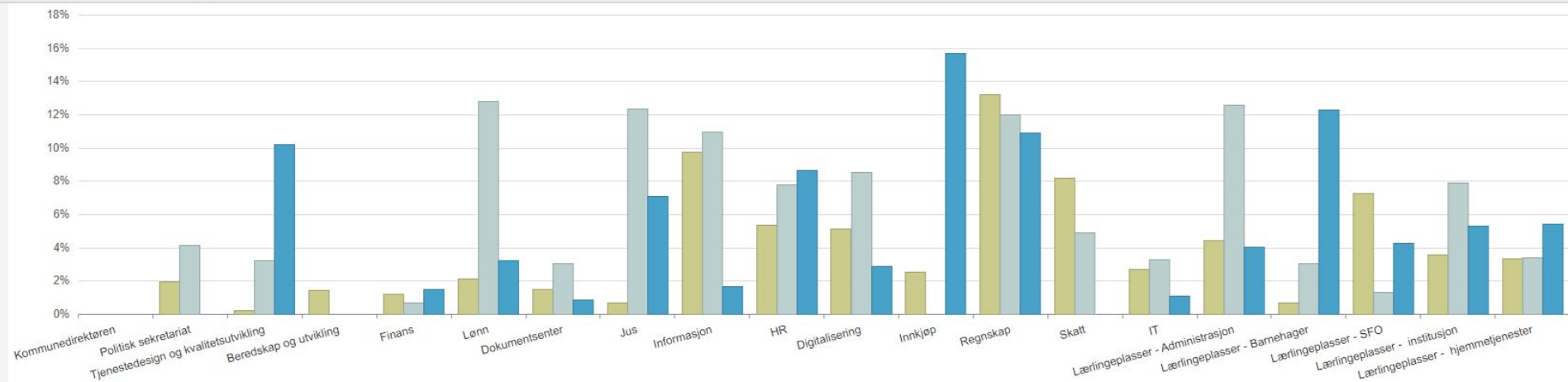
Akkumulert fravær : 8,68%




# Felles stab og støtte

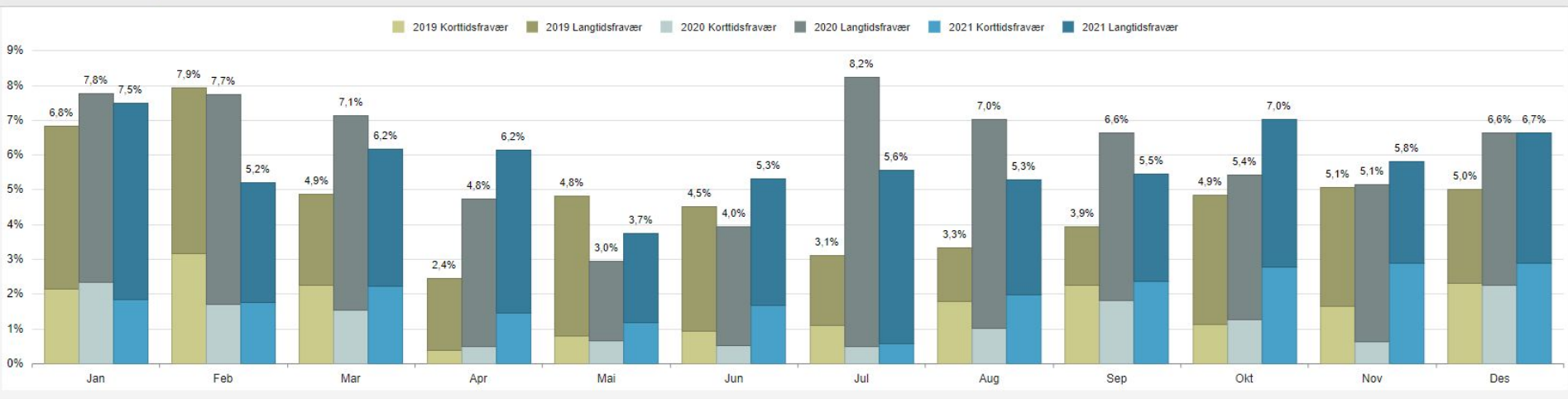
Fravær per enhet/ansvar ⓘ

Akkumulert fravær : 5,85%



# Felles stab og støtte

Fravær per periode 



Fravær per enhet/ansvar 

Akkumulert fravær : 5,85%



