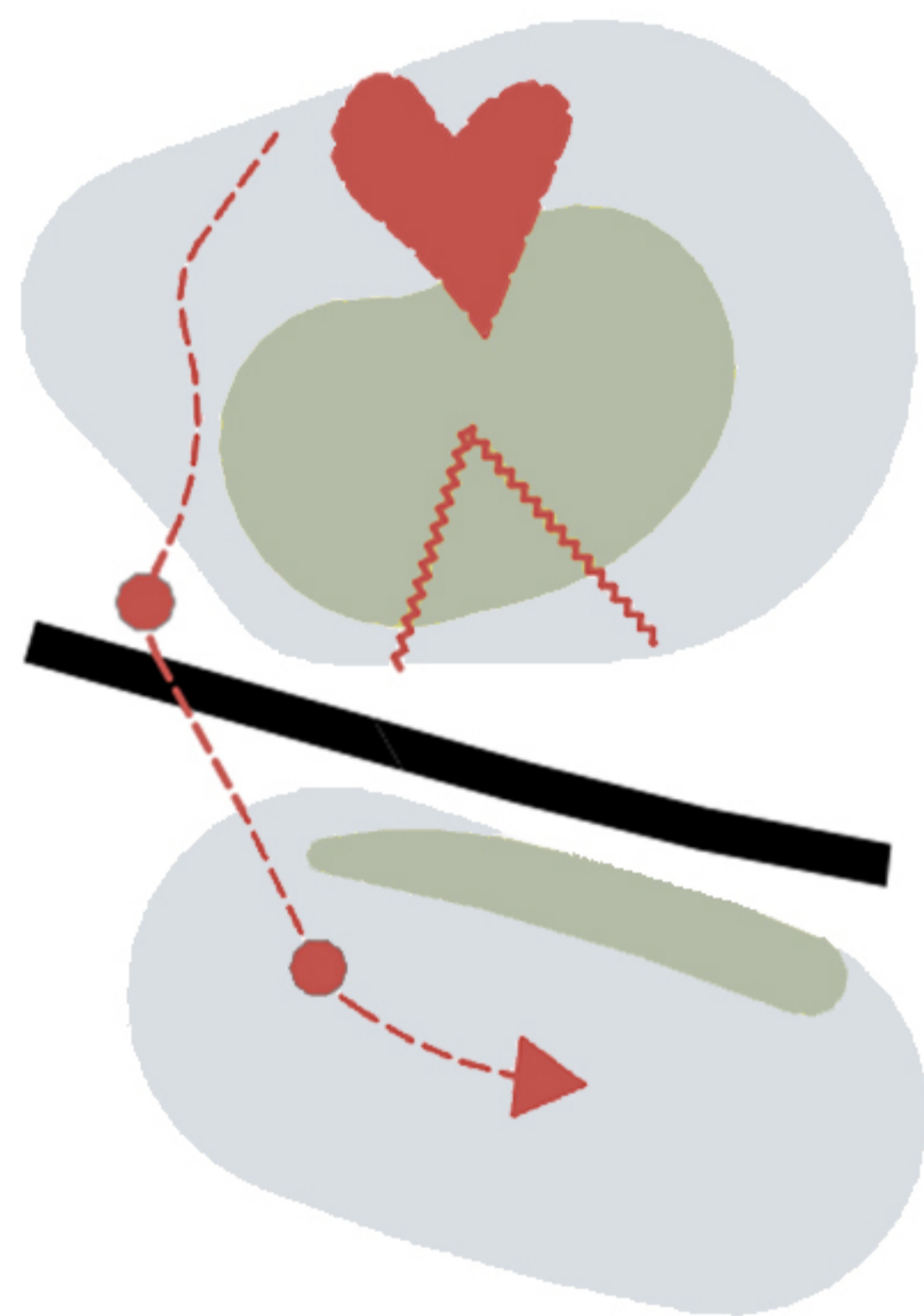


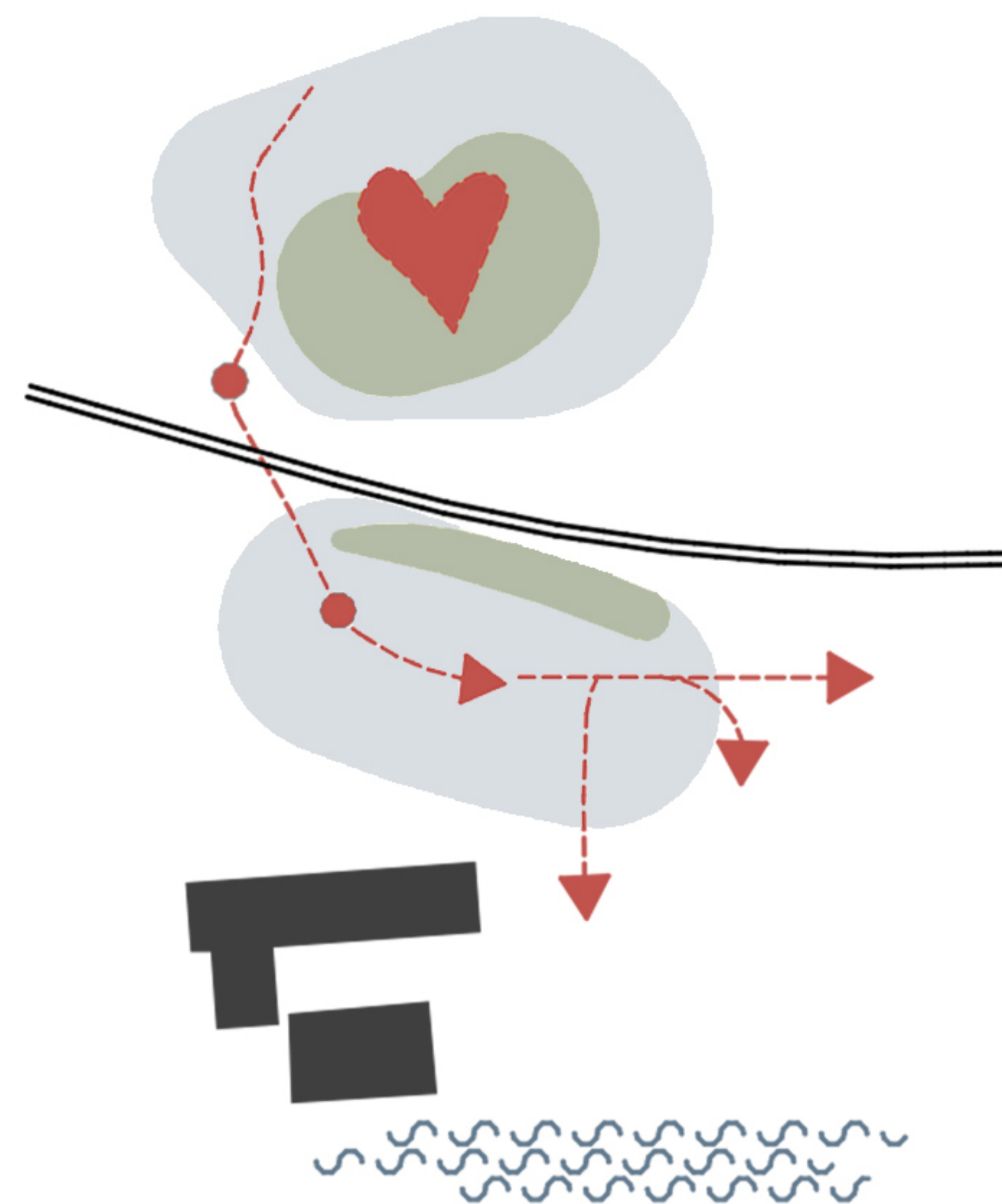
Larvik (NO)

Bruggefjellet - Uniting Larvik's Heart and Horizon

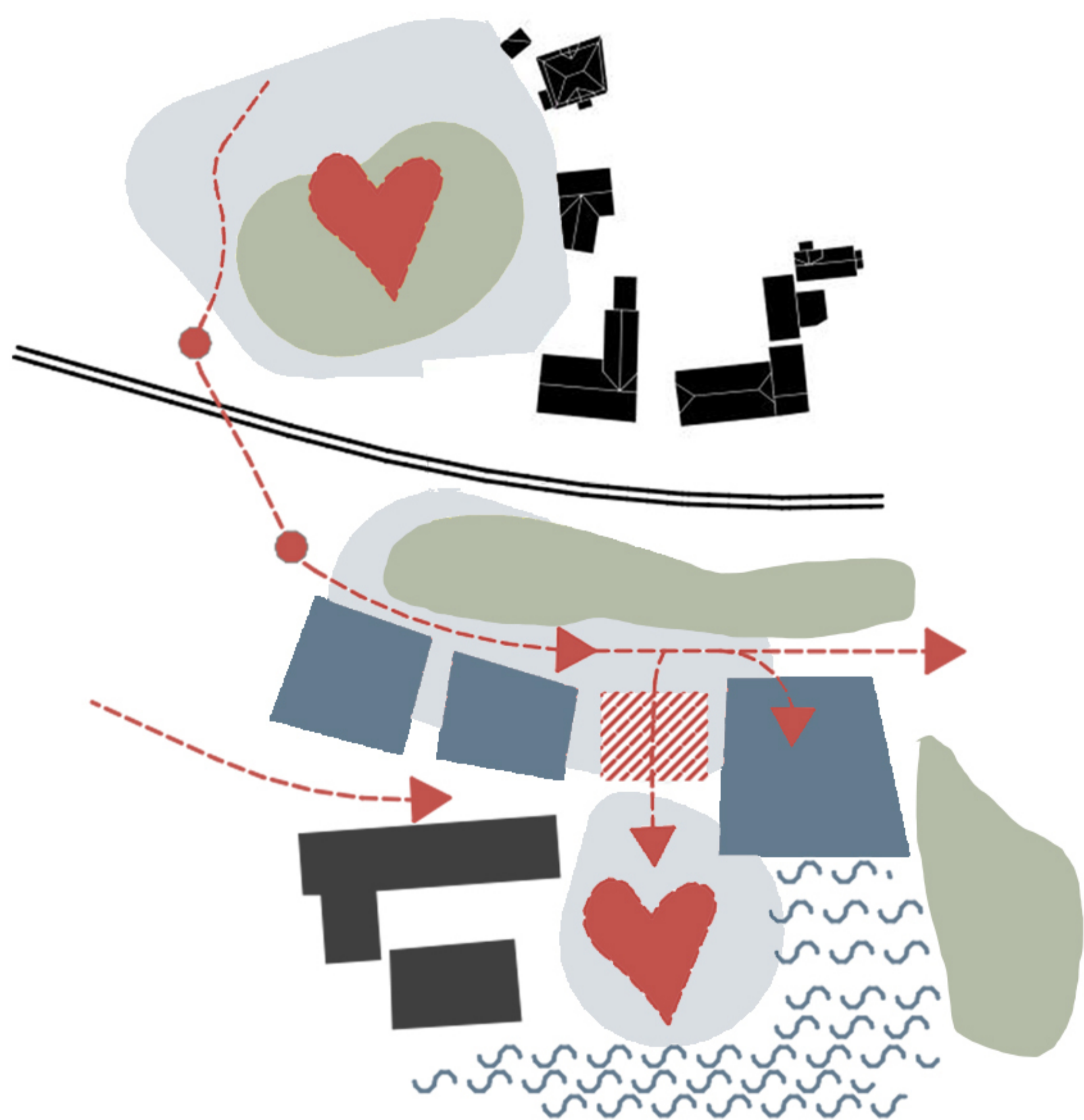
At the core of the project is the connection issue between Larvik's city centre and the harbour area, which is currently hindered by a busy road, a railway line, and steep topography. The vision is to create a transformative intervention that revitalizes the town, bringing the centre and seafont together in a way that makes Larvik feel smaller, more attractive, and highly accessible.



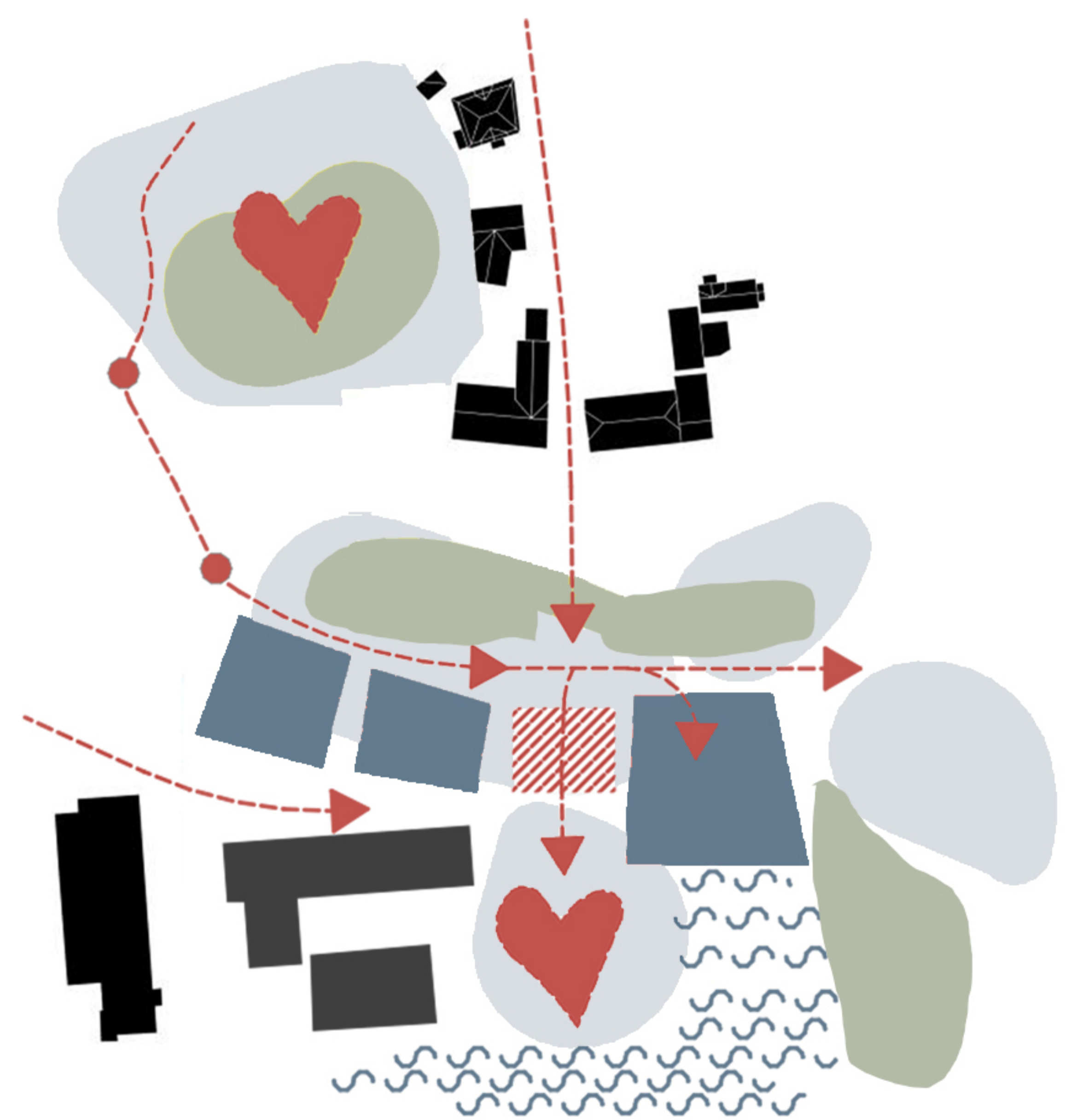
A pedestrian and cycling bridge is proposed as the main element physically connecting two disconnected areas



The bridge turns into a gently sloping pathway that descend towards the harbour and the sea



The new facilities are located along the existing urban forest, integrating with the existing historical buildings and creating a new urban living room in front of the sea



In the future, when the railway is underground, the city can connect through the main axis created towards the new urban living room

The bridge and the Larvik's green pathway.

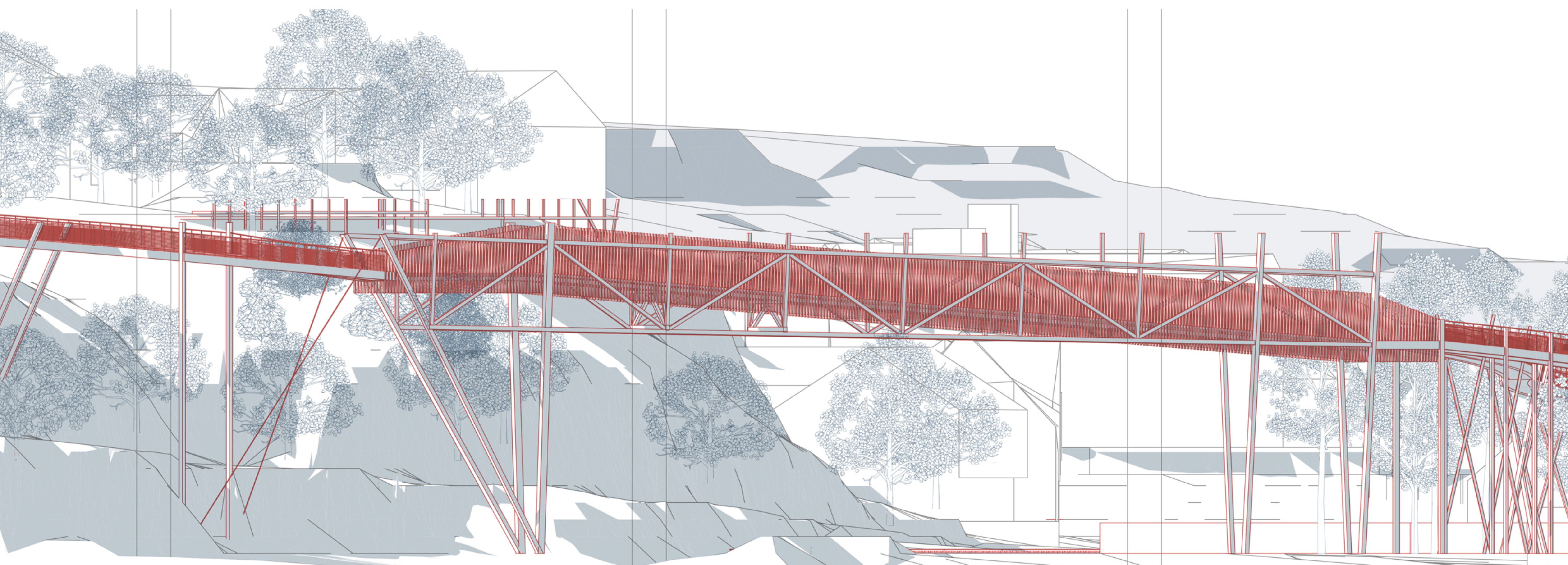
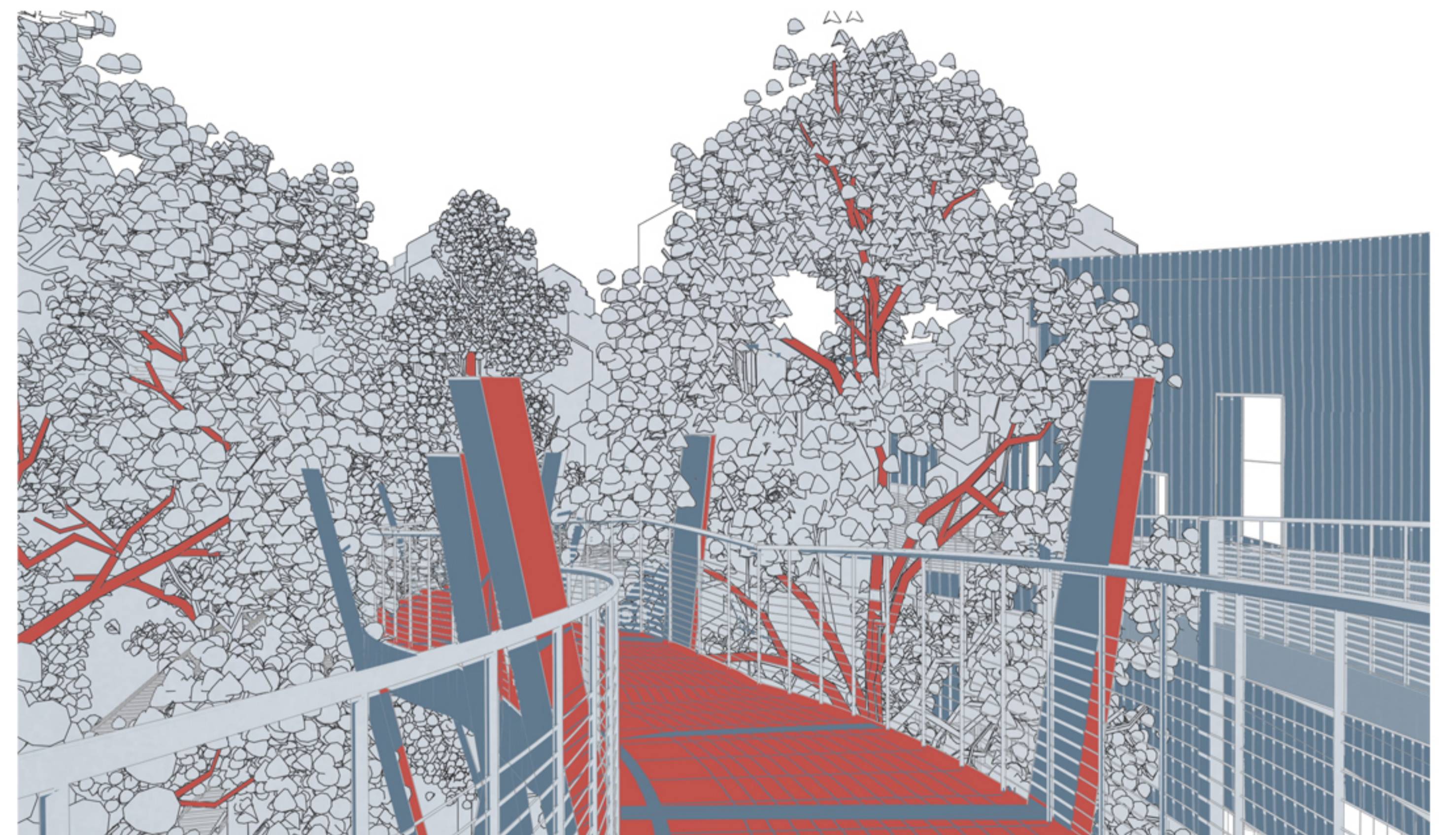
Picture yourself strolling through the heart of Larvik, just a five-minute walk from the bustling main square. As you embark on your journey, you find yourself stepping onto a magnificent wooden walkway that winds its way through the lush treetops. The walkway offers stunning views of the majestic sea, immersing you in a sense of tranquility and connection to the waterfront.



The design places great importance on preserving and improving the existing green areas, ensuring that nature thrives within this five-minute walk from the city centre. We believe that harmonizing the needs of both humans and the natural environment is crucial. By extending the green areas, a green scenic route is created right in the heart of Larvik, inviting residents and visitors to embark on a refreshing urban experience.

The green pathway actively promotes green mobility, encouraging everyone to embrace eco-friendly transportation options such as biking. Accessibility is a priority for all, and the walkway will be designed to welcome individuals of all abilities, ensuring inclusivity for the entire community.

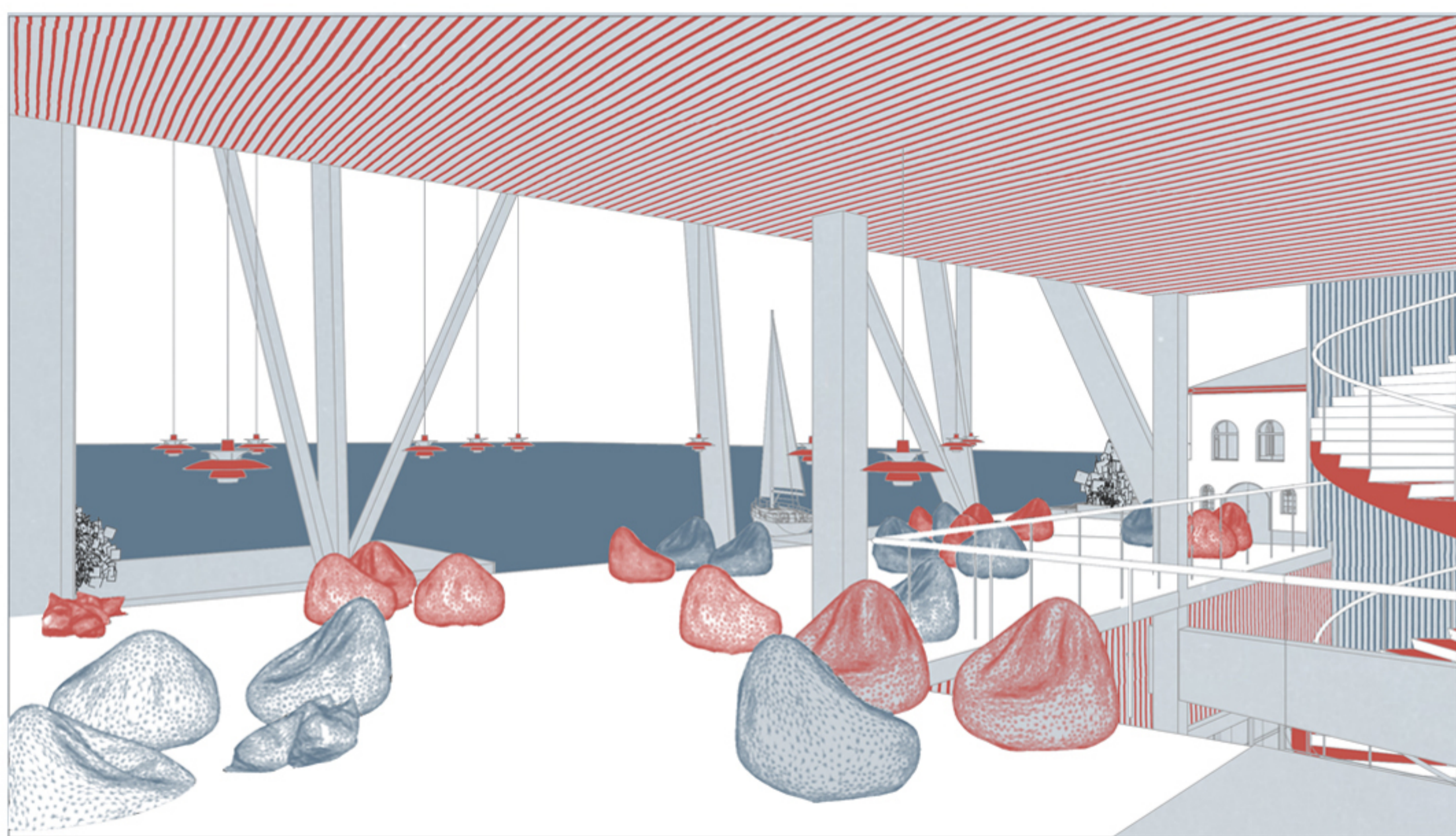
The walkway isn't just a passageway. It's a vibrant community space, flexible and open to a myriad of activities. Imagine public events coming to life, leisure activities captivating young and old, people enjoying a refreshing swim in the sea, and delightful outdoor food areas bringing the community together. To further enhance the human connection with nature, the walkway will be enriched with local vegetation, creating a diverse and thriving ecosystem right at everyone's feet.



Library facilities

At the heart of the project is the new library located in the vibrant harbour area. It's a mediator, a visionary space that looks ahead, advocating for change and seamlessly integrating with the city. With an open and flexible design, it adapts to various activities and fosters collaboration.

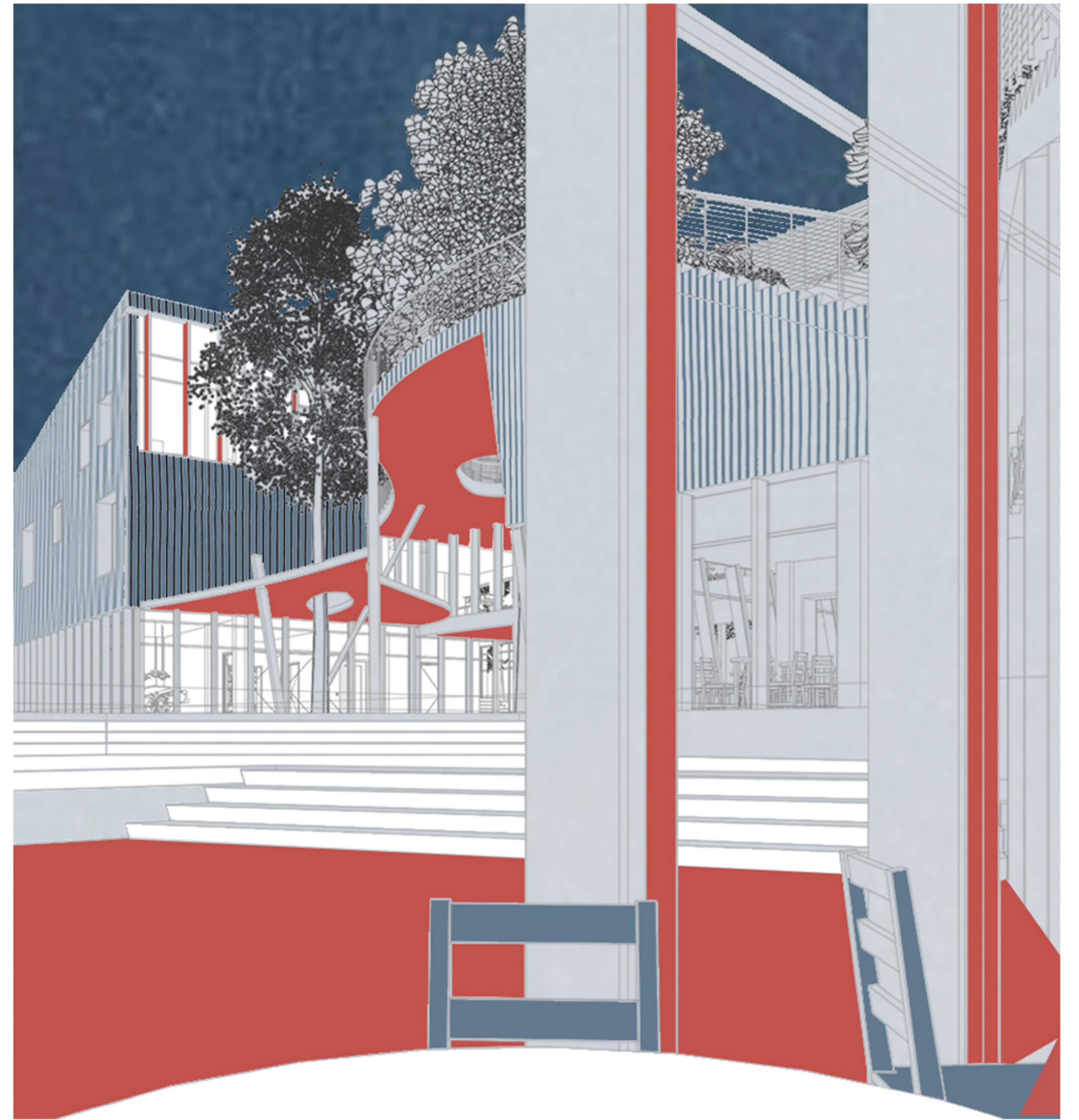
As you step inside, you'll be welcomed by panoramic sea views from the library's main areas, immersing you in the coastal beauty of Larvik. The library is more than a repository of books; it's a catalyst for community building, fostering inclusivity and transformation. It embraces diversity, offering spaces for learning, co-working, and collaboration, accommodating the needs of individuals, students, and professionals alike.



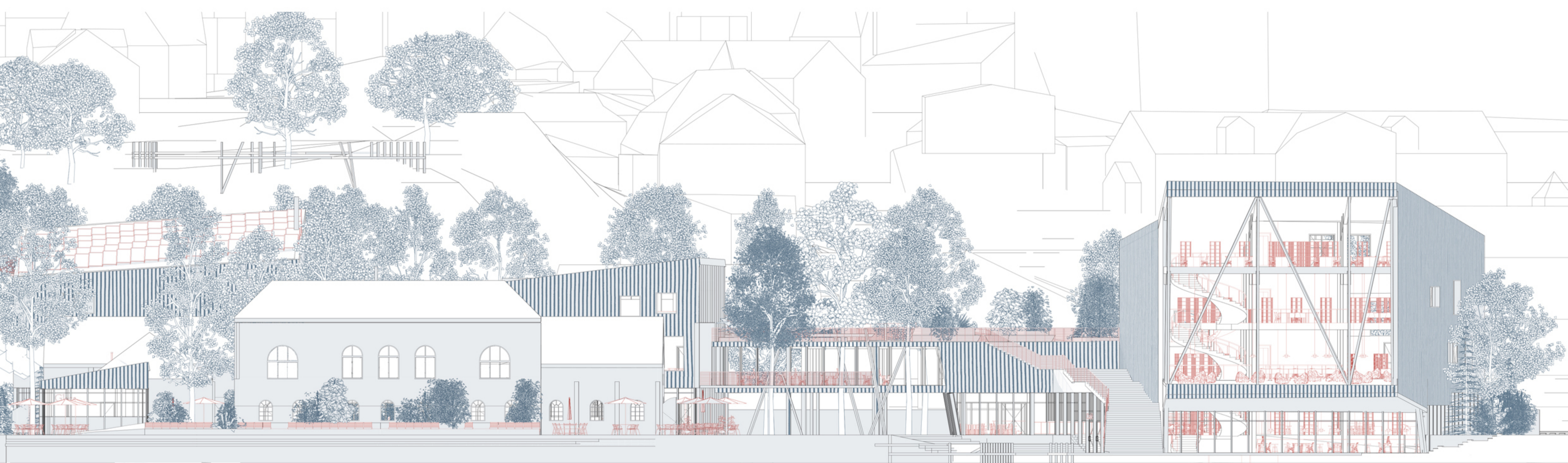
Imagine a dedicated kids' corner, a safe haven where children can explore, read, and engage in interactive learning. Specialized activity rooms, including an atelier, music room, and recording room, invite creativity, artistic expression, and collaborative projects.

To accommodate larger gatherings, the event space module boasts a spacious auditorium, accommodating up to 168 people. This versatile space serves as a hub for lectures, presentations, and community events, nurturing knowledge sharing and cultural activities.

the library's construction features a blend of tradition and modern technology within timber construction. The main structure is proposed to be a wooden construction with glue laminated post and beam structure, along with cross-laminated timber (CLT) slabs and walls. A photovoltaic system will be incorporated at the roof of the mediatheque module to generate local energy, powering the digital library.



Sustainable architecture is also a timeless architecture. The buildings are placed in such a way so that future direct integration with the city will be easier. It is an architecture that looks ahead and advocate for a change: redesign the railway! When this happens, the complex will drive and fit the future urban development of the area.



The Larvik Harbour Connection and Library Intervention project is an enchanting endeavor that aims to bring Larvik's city centre and harbour area together. By seamlessly bridging physical barriers, enhancing accessibility, and fostering community engagement, the intervention aims to create a vibrant and connected town. Through the charm of a picturesque walkway among treetops and the transformative power of a modern library facility, Larvik will become a place where distances feel smaller and where the town's unique character and heritage are celebrated.

