

# Topography for life

**Europan 17. Living cities/2**

Reimagining architectures by caring for inhabited milieus

**Larvik (NO)**



IA862

The proposal presents a holistic vision for the revitalization of Larvik, aiming to bridge the physical and perceptual divide between the town centre and the harbour, and to create an integrated, vibrant, and accessible urban landscape. Our design respects the town's historical, cultural, and geographical context, and is grounded in the principles of urban sustainability, inclusivity, and community participation.

## Larvik

Our general strategy is a bold testament to Larvik's transformation. We merge the town's rich heritage with modernity, and the urban landscape with nature. By consolidating the existing urban fabric, fostering heritage walks, creating green structures, reducing car dependency, and encouraging community participation, we are not just addressing challenges, but seizing opportunities to create a vibrant, sustainable, and inclusive town that respects its past while confidently embracing the future.

## The neighbourhood

Our neighbourhood strategies form the backbone of our revitalization vision for Larvik. We are crafting a neighbourhood that is woven with walkability, green connections, and bustling open spaces. Our aim is to reactivate the local landscape, creating a living, breathing neighbourhood teeming with sustainable growth, connectivity, and community spirit.

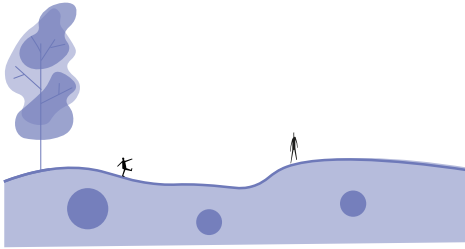


## The Heart of Larvik: The Library

Situated within the town's green heart, our proposed library is a testament to Larvik's topography and geological heritage. The design is sensitive to the landscape, ensuring minimal environmental impact.

The library is more than just a building—it's an open, flexible space designed to evolve with the needs of the community. It is shaped by the voices and visions of Larvik's residents, embodying their collective aspirations.

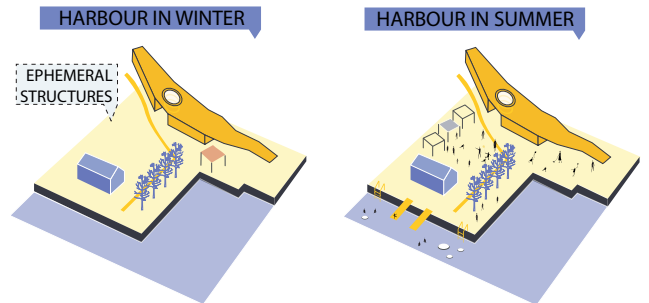
The library is seamlessly connected with the park, extending the public space and offering breathtaking views. It is a tranquil haven amidst nature, a place for community, connection, and contemplation—an architectural testament to Larvik's resilience, vibrancy, and enduring charm.



## Larvik's Gateway: The Harbour Hub

Positioned strategically at the harbour's entrance, the Harbour Gate Hub serves as a pivotal link between the park and the harbour. This innovative hub addresses the challenges outlined in the brief, forging a vibrant and accessible connection between Larvik's core areas.

The Hub is a beacon of Larvik's commitment to environmental responsibility. Crafted from sustainably sourced timber, it leaves a negative carbon footprint, making a bold statement about Larvik's commitment to sustainable development. Its flexible design allows it to act as a responsive container that evolves with the community's needs as determined by participatory processes. It is designed to adapt and grow with future train plans, reflecting the forward-thinking spirit of the town.



## Road Improvement and Long-Term Conversion to Green Park

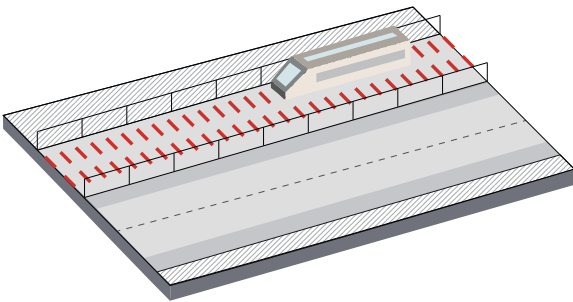
In the short term, the road adjacent to the railroad will be enhanced through the introduction of vegetal sound barriers. These barriers will minimize noise pollution from the railway and enrich the roadside with natural elements, creating a more peaceful and pleasant environment for the residents of Larvik.

In the long term, the railroad will be transformed into a green longitudinal park. This conversion will replace the hard lines of steel and gravel with lush vegetation, walking paths, and serene spaces for relaxation and recreation. The green park will enhance the town's green infrastructure and provide a peaceful, nature-infused corridor that stitches together various parts of the town.

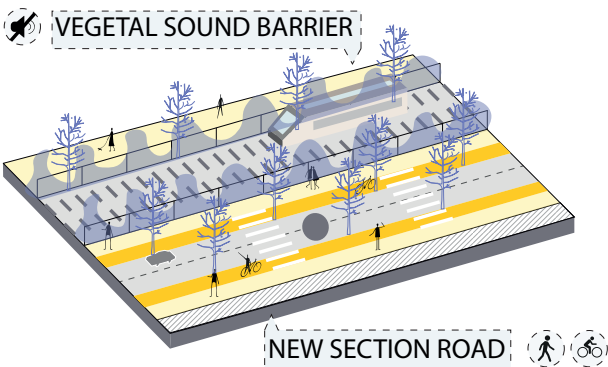
Our proposal offers a comprehensive and innovative approach to the revitalization of Larvik's town centre and neighbourhoods. Connecting the town centre and the harbour, preserving and integrating historic buildings, creating inviting outdoor spaces, and incorporating modern facilities such as a new library, we aim to create a vibrant, inclusive, and sustainable urban landscape that respects the town's rich heritage and meets the needs of its residents.

Through this proposal, we hope to contribute to the transformation of Larvik into a vibrant and attractive town that is well-connected, inclusive, and forward-looking, while staying true to its roots and heritage.

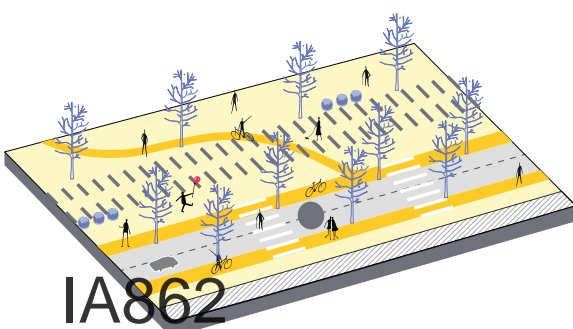
### CURRENT STATE



### NEW SECTION ROAD



### RAIL TRAIN GREEN PARK



IA862

